

SHANGHAI SUPERHOUSE BUILDING MATERIAL CO., LTD. SPA 100 HORIZONTAL SLIDING GLASS WINDOW SYSTEM - L.M.I.

GENERAL NOTES:

- THIS PRODUCT HAS BEEN DESIGNED AND TESTED TO COMPLY WITH THE REQUIREMENTS OF THE 6TH EDITION FLORIDA BUILDING CODE (2017) INCLUDING HIGH VELOCITY HURRICANE ZONE (HVHZ).
- WINDOWS RATED FOR LARGE AND SMALL MISSILE IMPACT. LMI SYSTEM TO BE USED FOR INSTALLATIONS UP TO 30 FT OF GRADE. FOR ABOVE 30 FT OF GRADE, SMI TO BE USED. IMPACT SHUTTERS ARE NOT REQUIRED.
- THIS WINDOW ARE APPROVED FOR AIR AND WATER INFILTRATION.
- ANCHORS SHALL BE AS LISTED, SPACED AS SHOWN ON DETAILS. ANCHORS EMBEDMENT TO BASE MATERIAL SHALL BE BEYOND WALL DRESSING OR STUCCO.
- ANCHORING OR LOADING CONDITIONS NOT SHOWN IN THESE DETAILS ARE NOT PART OF THIS APPROVAL.
- MATERIALS INCLUDING BUT NOT LIMITED TO STEEL/METAL SCREWS THAT COME INTO CONTACT WITH OTHER DISSIMILAR MATERIALS SHALL MEET THE REQUIREMENTS OF THE 6TH EDITION FLORIDA BUILDING CODE (2017) SECTION AS APPLICABLE.
- METAL STRUCTURES NOT SHANGHAI SUPERHOUSE BUILDING MATERIAL TO BE DESIGNED TO SUPPORT THE LOADS IMPOSED BY THIS GLAZING SYSTEM AND TO TRANSFER SUCH LOADS TO THE BUILDING MAIN STRUCTURE.
- ULTIMATE LOAD OBTAINED FROM ASCE 7-10, MULTIPLY BY 0.6 SHALL BE LESS THAN OR EQUAL TO MAX. DESIGN LOAD IN THIS DOCUMENT. THE DESIGN LOADS SHOWN IN THIS DOCUMENT ARE ALLOWABLE DESIGN LOADS.

USE CHARTS AS FOLLOWS.

- STEP 1:** DETERMINE DESIGN WIND LOAD REQUIREMENTS BASED ON WIND VELOCITY, BLDG. HEIGHT, WIND ZONE USING APPLICABLE ASCE 7-10 STANDARD OR WIND TUNNEL REPORTS.
- STEP 2:** SEE SHEET E1 FOR TYPICAL WINDOW ELEVATION.
- STEP 3:** SEE SHEET A1 FOR ANCHOR OPTIONS. SEE SHEET E1 FOR NUMBER OF ANCHORS REQUIRED.

ABBREVIATIONS AND SYMBOLS	
D.L.O. - DAYLITE OPENING	
F.H. - FRAME HEIGHT	
F.W. - FRAME WIDTH	
W/ - WITH	
W/O - WITHOUT	
O.C. - ON CENTER	

LIMITATIONS OF USE	
A- THIS PRODUCT EVALUATION DOCUMENT (P.E.D.) PREPARED BY THIS ENGINEER IS GENERIC AND DOES NOT PROVIDE INFORMATION FOR A SITE SPECIFIC PROJECT; i.e. WHERE THE SITE CONDITIONS DEVIATE FROM THE P.E.D.	
B- CONTRACTOR TO BE RESPONSIBLE FOR THE SELECTION, PURCHASE AND INSTALLATION OF THIS PRODUCT BASED ON THIS PRODUCT EVALUATION PROVIDED HE/SHE DOES NOT DEVIATE FROM THE CONDITIONS DETAILED ON THIS DOCUMENT.	
C- THIS PRODUCT EVALUATION DOCUMENT WILL BE CONSIDERED INVALID IF ALTERED BY ANY MEANS.	
D- SITE SPECIFIC PROJECTS SHALL BE PREPARED BY A FLORIDA REGISTERED ENGINEER OR ARCHITECT WHICH WILL BECOME THE ENGINEER OF RECORD (E.O.R.) FOR THE PROJECT AND WHO WILL BE RESPONSIBLE FOR THE PROPER USE OF THE P.E.D. ENGINEER OF RECORD, ACTING AS A DELEGATED ENGINEER TO THE P.E.D. ENGINEER SHALL SUBMIT TO THIS LATTER THE SITE SPECIFIC DRAWINGS FOR REVIEW.	
E- THIS P.E.D. SHALL BEAR THE DATE AND ORIGINAL SEAL AND SIGNATURE OF THE PROFESSIONAL ENGINEER OF RECORD THAT PREPARED IT.	

FLORIDA APPROVAL:
FL # 30923.1

YIPING WANG, P.E.
FLORIDA REGISTRATION
FL #55983
C.A.N. 28677

MCY ENGINEERING, INC.
GLAZING CONSULTANTS
12781 MIRAMAR PARKWAY #301
MIRAMAR, FL 33027 P: 786.360.2786
www.MCYEngineering.com mcy@mcyengineering.com

SPA100 Sliding Glass Door SYSTEM - L.M.I.&S.M.I.
SHANGHAI SUPERHOUSE BUILDING MATERIAL
No.10 Hangfan Road, Pudong District,
Shanghai, China
TEL:86 021-5822 0630

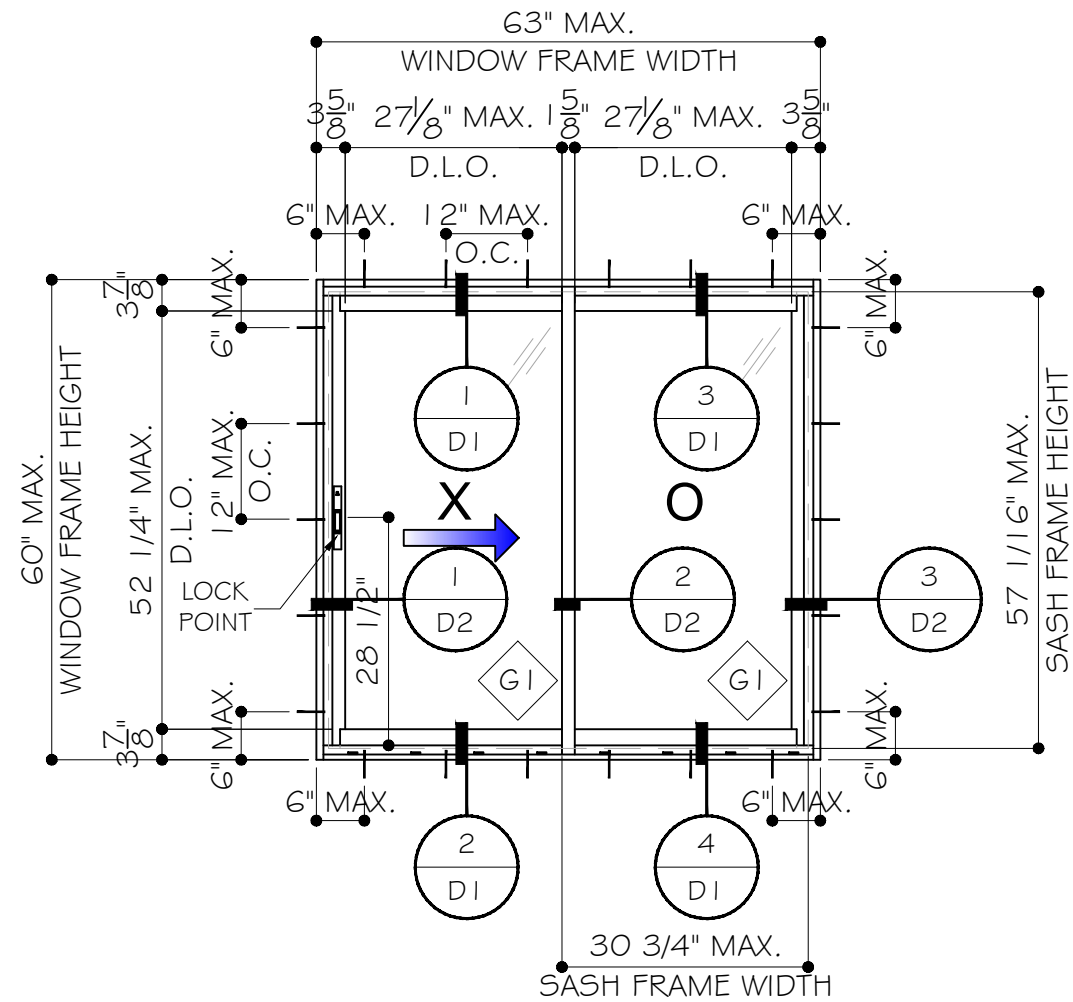
Rev. No.	Date	Drawn By	Description

Drawn Date: 12/04/2019 Drawn By: _____

DRAWING NO.
AD19-29

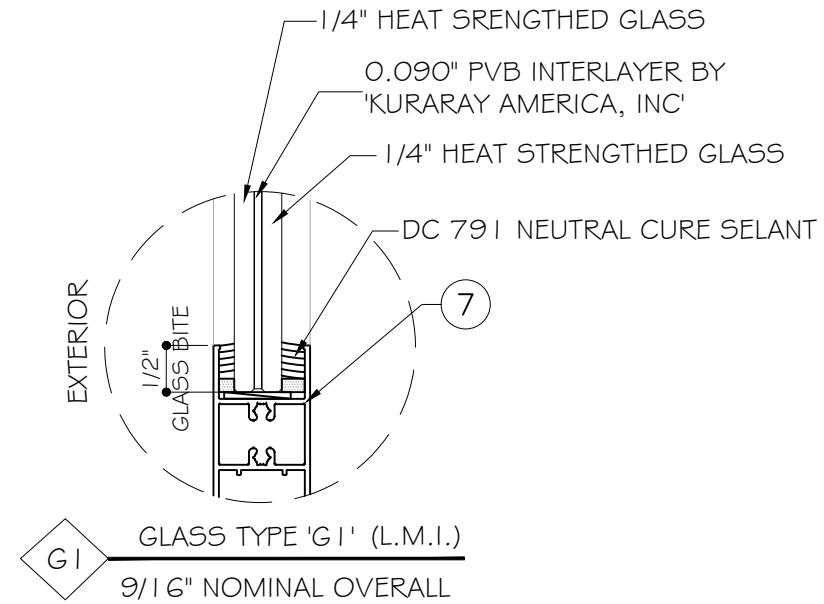
COVER

Sheet No.
1 OF 8



TYPICAL EXTERIOR ELEVATIONS

DESIGN LOADS
(FOR SIZE SHOWN ABOVE OR SMALLER AS PERMITTED BY FBC)
+55 PSF
-55 PSF



NOTE:
GLASS COMPLIES WITH ASTM E1300-09
(3 SEC. GUSTS).

FLORIDA APPROVAL:
FL # 30923.1

YIPING WANG, P.E.
FLORIDA REGISTRATION
FL #55983
C.A.N. 28677

SPA100 Sliding Glass Door SYSTEM - L.M.I.&S.M.I.
SHANGHAI SUPERHOUSE BUILDING MATERIAL
No.10 Hangfan Road, Pudong District,
Shanghai, China
TEL.86 021-5822 0630

Rev. No.	Date	Drawn By	Description

Drawn Date
12/04/2019

Drawn By

DRAWING NO.
AD19-29

E1

Sheet No.
2 OF 8

MCY ENGINEERING, INC.
GLAZING CONSULTANTS
12781 MIRAMAR PARKWAY #301
MIRAMAR, FL 33027 P: 786.360.2786
www.MCYEngineering.com mcy@mcyengineering.com

**TYPICAL ANCHOR TYPES:
SEE ELEVATIONS FOR SPACING**

**TYPE "A": 1/4" DIA. ULTRACON BY 'ELCO' (Fu=177 KSI, Fy=155 KSI)
DIRECTLY INTO CONCRETE
WITH 1 3/4" MIN. EMBED INTO CONCRETE**

INTO 2BY WOOD BUCKS OR WOOD STRUCTURES
WITH 1 1/2" MIN. EMBED
OR THRU WOOD BUCK INTO CONCRETE OR BLOCK
WITH 1 3/4" MIN. EMBED

INTO HOLLOW BLOCK(JAMB ONLY)
WITH 1 1/4" MIN. EMBED

INTO GROUT FILLED BLOCKS(JAMB ONLY)
WITH 1 3/4" MIN. EMBED

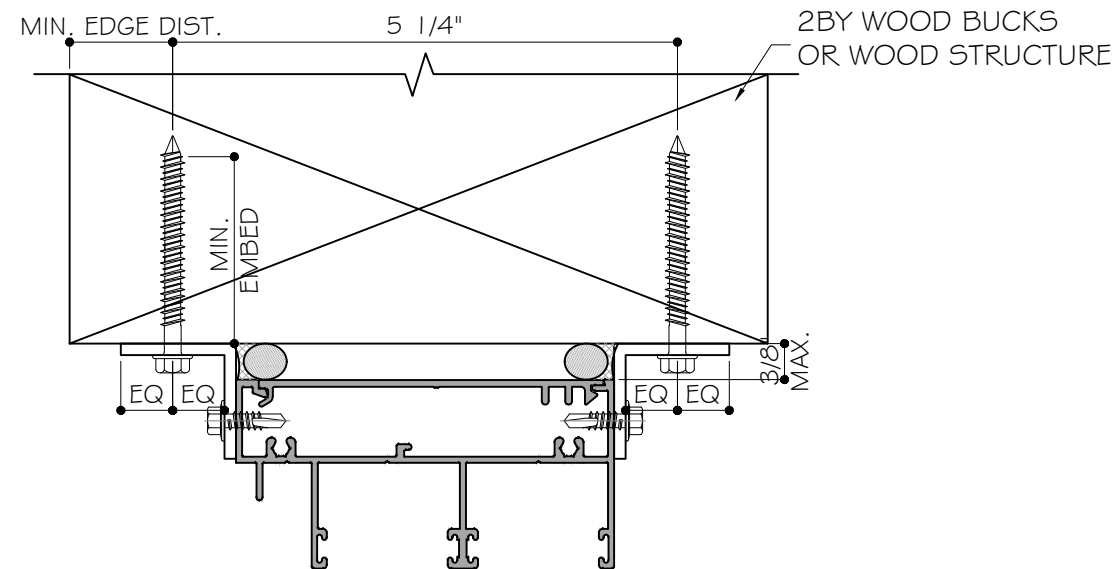
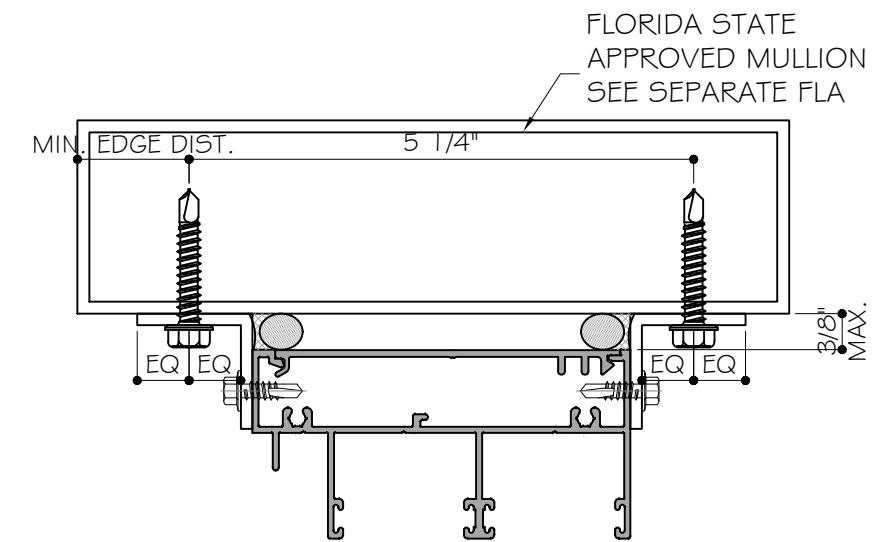
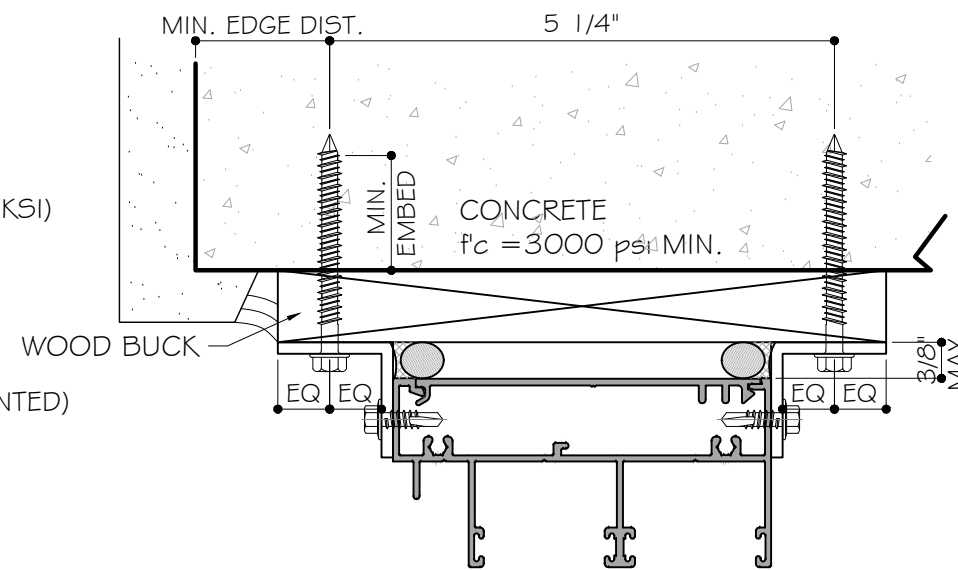
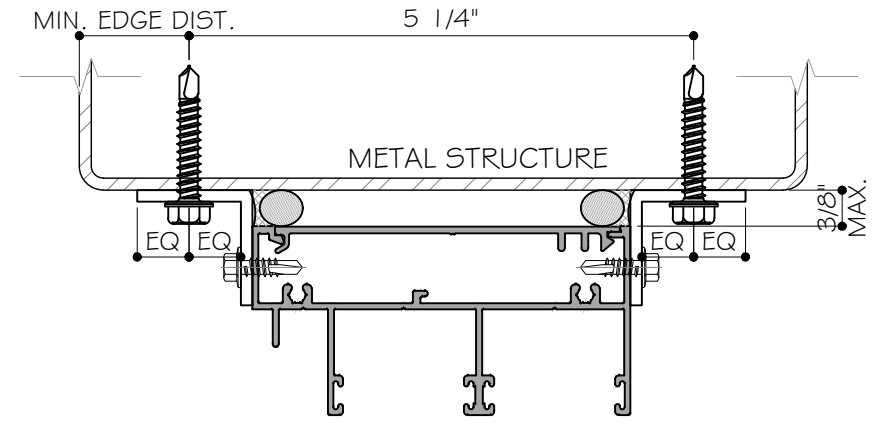
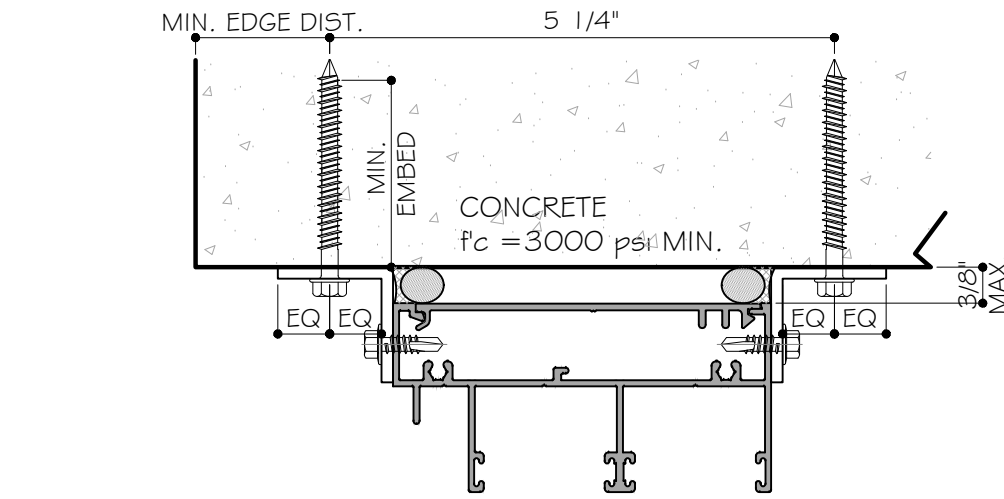
**TYPE "B": 1/4" SMS (Fu=74KSI, Fy=57KSI)
OR SELF DRILLING SCREW(GRADE 5) (Fu=120 KSI, Fy=90 KSI)
INTO APPROVED MULLIONS
(1/8" THK. MIN.) INTO METAL STRUCTURE**

STEEL: 1/8" MIN. (Fy=36 KSI MIN.)
ALUMINUM: 1/8" THK. MIN. (6063-T6 MIN.)
(STEEL IN CONTACT WITH ALUMINUM TO BE PLATED OR PANTED)

**TYPICAL ANCHOR EDGE DISTANCE:
INTO CONCRETE AND MASONRY = 2 1/2" MIN.
INTO WOOD STRUCTURE = 1" MIN.
INTO METAL STRUCTURE = 3/4" MIN.**

WOOD SG = 0.55 MIN.
CONCRETE f'c = 3000 psi MIN.
C-90 HOLLOW/FILLED BLOCK fm = 2000 psi MIN.

GLAZING BEAD AT FRAME SILL SEALED TO GLASS WITH DOW CORNING 791.
FRAME CORNERS SEALED WITH DOW CORNING 791 OR EQUAL COMPATIBLE



1X OR 2X WOOD BUCKS AND METAL STRUCTURES NOT BY SHANGHAI SUPERHOUSE BUILDING MATERIAL MUST SUPPORT LOADS IMPOSED BY GLAZING SYSTEM AND TRANSFER THEM TO THE BUILDING STRUCTURE.

FLORIDA APPROVAL:
FL # 30923.1

YIPING WANG, P.E.
FLORIDA REGISTRATION
FL #55983
C.A.N. 28677

SPA100 Sliding Glass Door SYSTEM - L.M.I.&S.M.I.
SHANGHAI SUPERHOUSE BUILDING MATERIAL
No.10 Hangfan Road, Pudong District,
Shanghai, China
TEL:86 021-5822 0630

Rev. No.	Date	Drawn By	Description

Drawn Date: 12/04/2019
Drawn By:

DRAWING NO.
AD19-29

Sheet No.
A1

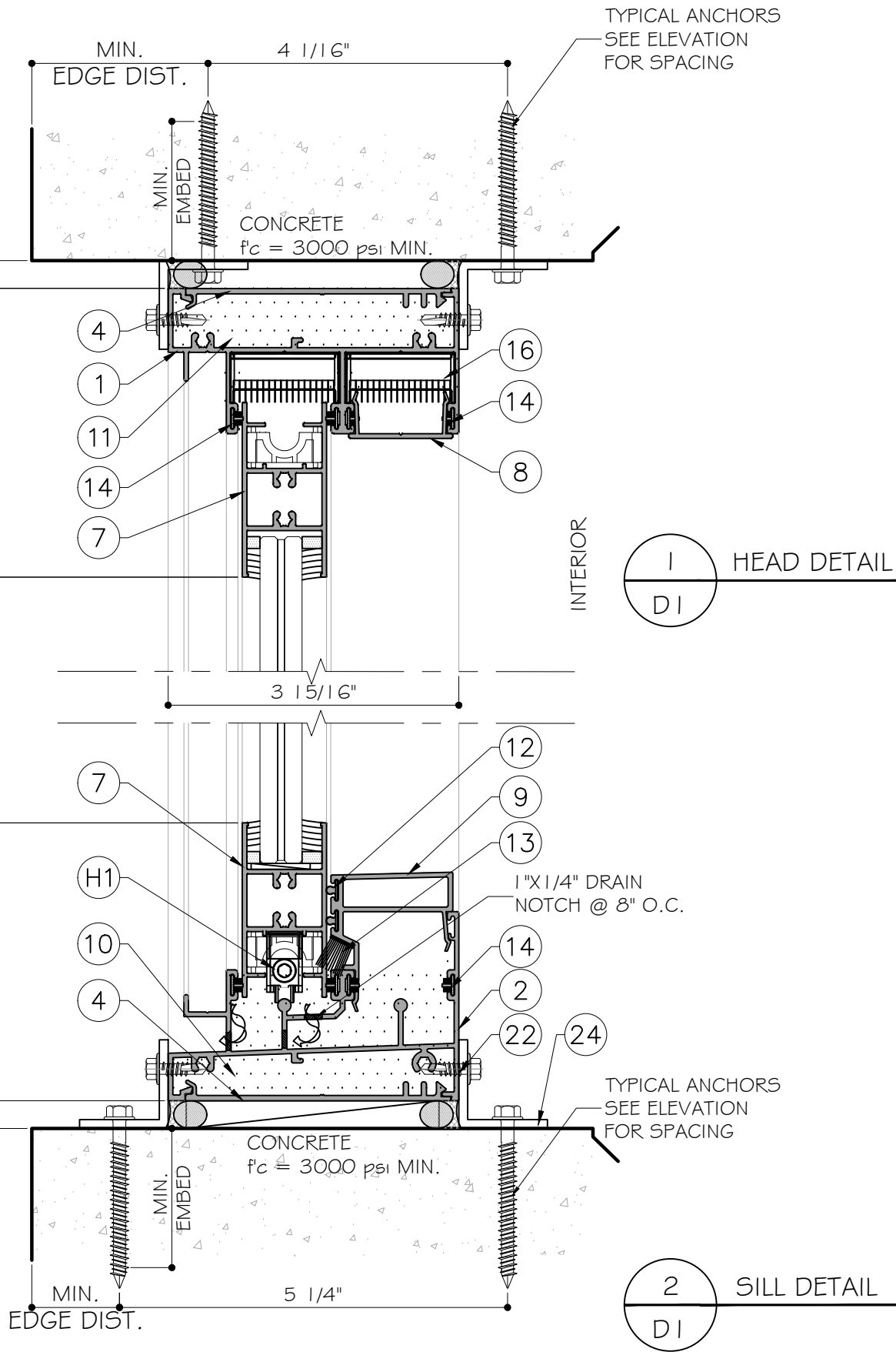
3 OF 8

MCY ENGINEERING, INC.
GLAZING CONSULTANTS
12781 MIRAMAR PARKWAY #301
MIRAMAR, FL 33027 P: 786-360-2786
www.MCYEngineering.com mcy@mcyengineering.com

EXTERIOR

WINDOW FRAME HEIGHT

3/8" 3 15/16" D.L.O. D.L.O. 3 3/4" 3/8"



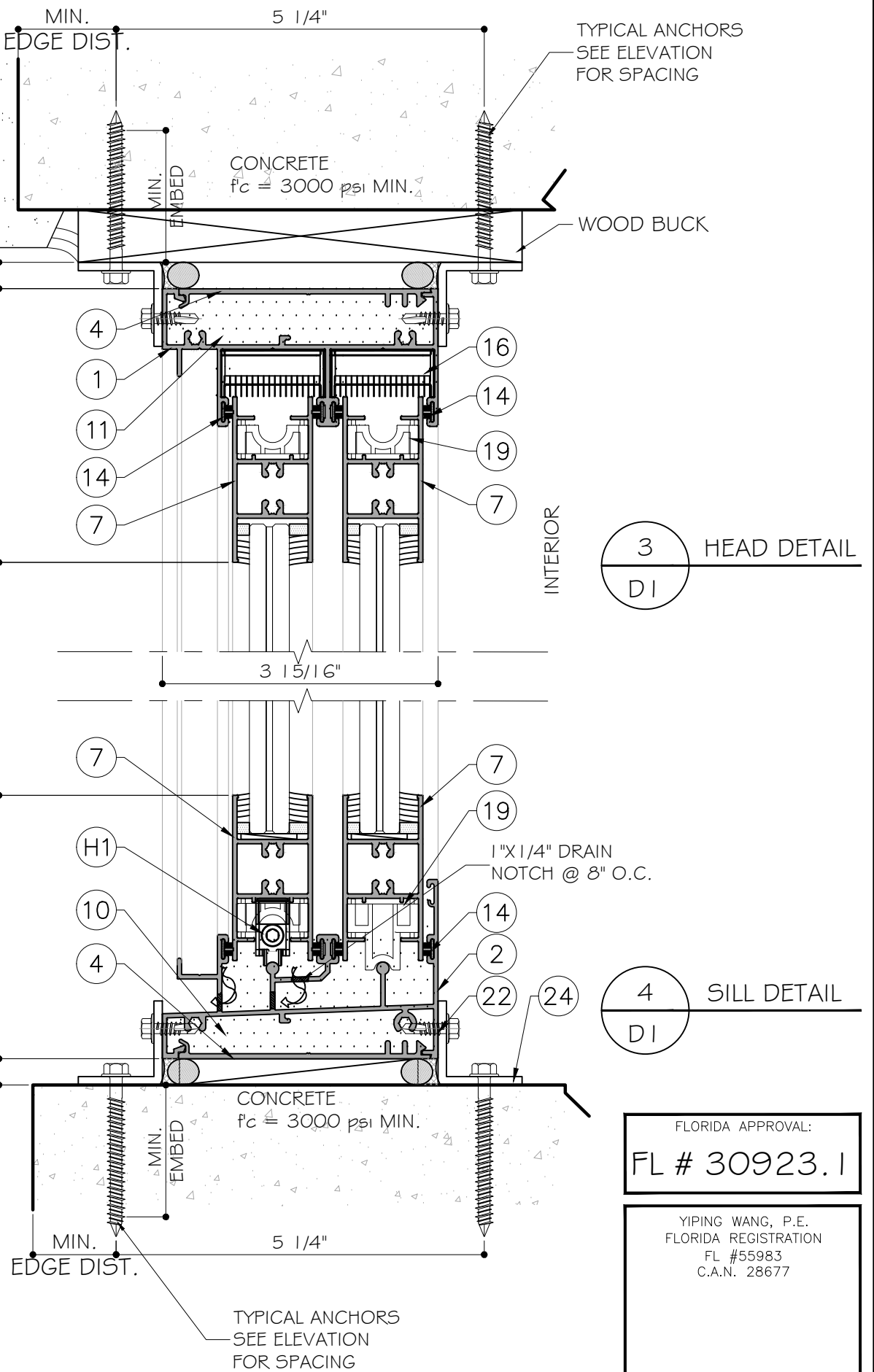
1 HEAD DETAIL
DI

2 SILL DETAIL
DI

EXTERIOR

WINDOW FRAME HEIGHT

3/8" 3 15/16" D.L.O. D.L.O. 3 3/4" 3/8"



3 HEAD DETAIL
DI

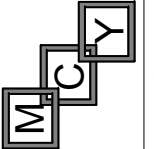
4 SILL DETAIL
DI

FLORIDA APPROVAL:
FL # 30923.1

YIPING WANG, P.E.
FLORIDA REGISTRATION
FL #55983
C.A.N. 28677

SPA100 Sliding Glass Door SYSTEM - L.M.I.&S.M.I.

SHANGHAI SUPERHOUSE BUILDING MATERIAL
No.10 Hangfan Road, Pudong District,
Shanghai, China



MCY ENGINEERING, INC.
GLAZING CONSULTANTS

12781 MIRAMAR PARKWAY #301
MIRAMAR, FL 33027 P: 786-360-2786

www.MCYEngineering.com mcy@mcyengineering.com

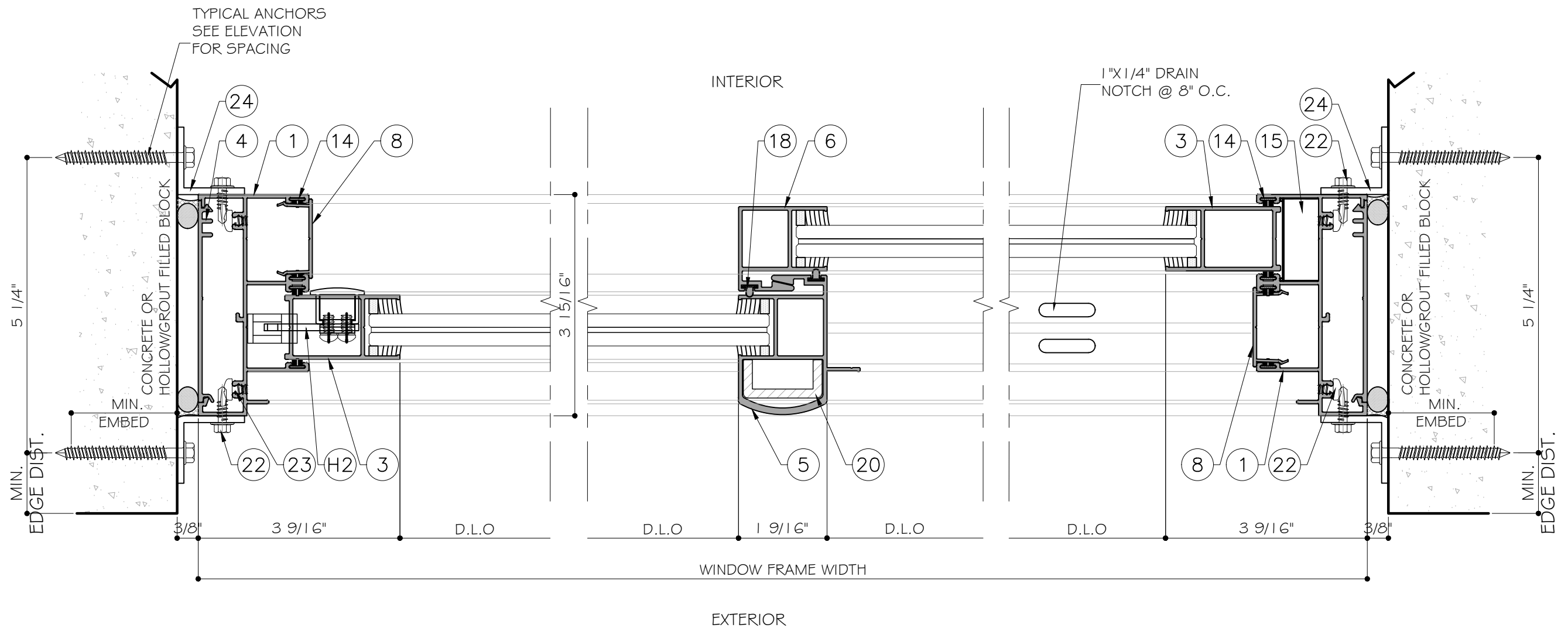
Rev. No.	Date	Drawn By	Description

Drawn Date 12/04/2019

DRAWING NO.
AD19-29

Sheet No.
D1

4 OF 8



1 JAMB DETAIL
D2

2 INTERLOCK DETAIL
D2

3 JAMB DETAIL
D2

FLORIDA APPROVAL:
FL # 30923.1

YIPING WANG, P.E.
FLORIDA REGISTRATION
FL #55983
C.A.N. 28677

Rev. No.	Date	Drawn By	Description

Drawn Date
12/04/2019

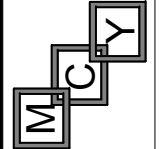
Drawn By
AD19-29

DRAWING NO.
AD19-29

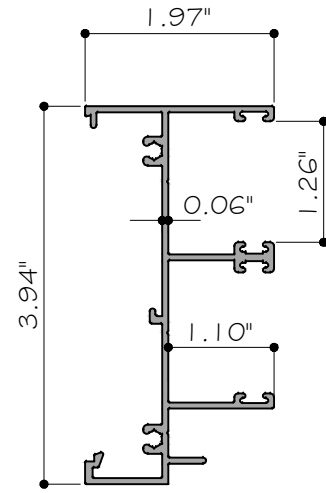
Sheet No.
D2

5 OF 8

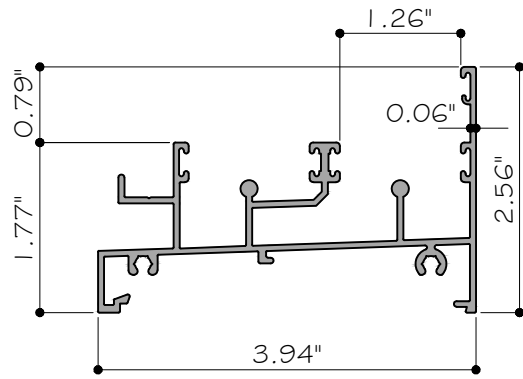
SPA100 Sliding Glass Door SYSTEM - L.M.I.&S.M.I.
SHANGHAI SUPERHOUSE BUILDING MATERIAL
No. 10 Hangfan Road, Pudong District,
Shanghai, China
TEL: 86 021-5822 0630



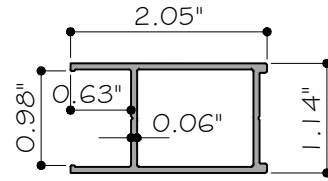
MCY ENGINEERING, INC.
GLAZING CONSULTANTS
12781 MIRAMAR PARKWAY #301
MIRAMAR, FL 33027 P: 786.360.2786
www.MCYEngineering.com mcy@mcyengineering.com



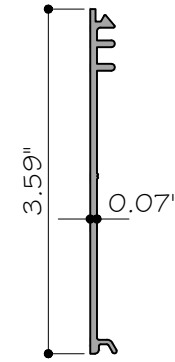
1 WINDOW FRAME
SPA10061 6063-T5



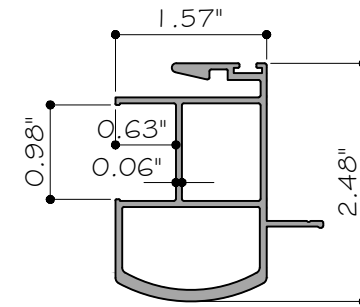
2 WINDOW TRACK
SPA10062 6063-T5



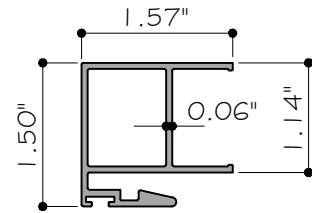
3 WINDOW STILE
SPA10076 6063-T5



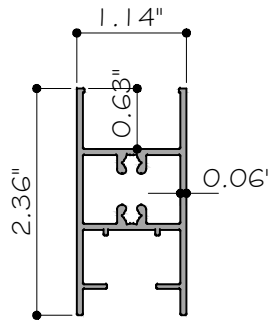
4 FLUSH ADAPTOR
SPA10007 6063-T5



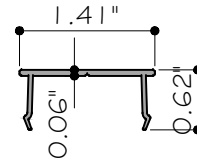
5 HEAVY DUTY INTERLOCK
SPA10095 6063-T5



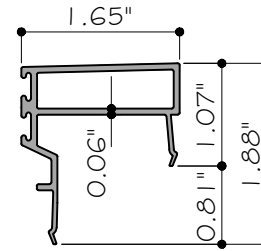
6 STANDARD INTERLOCK
SPA10064 6063-T5



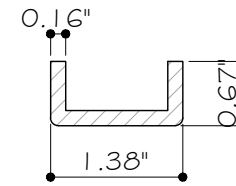
7 TOP & BOTTOM RAIL
SPA10065 6063-T5



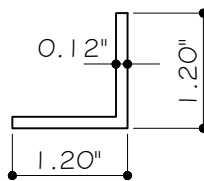
8 FRAME ADAPTOR
SPA10067 6063-T5



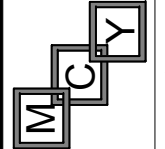
9 SILL ADAPTOR
SPA10170 6063-T5



20 INTERLOCK REINFORCEMENT
REI-SW001 GALVANIZED STEEL



24 ALUM. ANGLE
0325 6063-T6



MCY ENGINEERING, INC.
GLAZING CONSULTANTS

12781 MIRAMAR PARKWAY #301
MIRAMAR, FL 33027 P: 786.360.2786

www.MCYEngineering.com mcy@mcyengineering.com

SPA100 Sliding Glass Door SYSTEM - L.M.I.&S.M.I.
SHANGHAI SUPERHOUSE BUILDING MATERIAL

No.10 Hangfan Road, Pudong District,
Shanghai, China
TEL:86 021-5822 0630

FLORIDA APPROVAL:
FL # 30923.1

YIPING WANG, P.E.
FLORIDA REGISTRATION
FL #55983
C.A.N. 28677

Rev. No.	Date	Drawn By	Description

Drawn Date: 12/04/2019
Drawn By:

DRAWING NO.
AD19-29

PARTS

Sheet No.
6 OF 8

BILL OF MATERIALS

ITEM	PART	DESCRIPTION	MATERIAL	MANUF. / REMARKS
1	SPA10061	WINDOW FRAME	ALUM. 6063-T5	-
2	SPA10062	WINDOW TRACK	ALUM. 6063-T5	-
3	SPA10076	WINDOW STILE	ALUM. 6063-T5	-
4	SPA10007	FLUSH ADAPTOR	ALUM. 6063-T5	-
5	SPA10095	HEAVY DUTY INTERLOCK	ALUM. 6063-T5	-
6	SPA10064	STANDARD INTERLOCK	ALUM. 6063-T5	-
7	SPA10065	TOP & BOTTOM RAIL	ALUM. 6063-T5	-
8	SPA10067	FRAME ADAPTOR	ALUM. 6063-T5	-
9	SPA10170	SILL ADAPTOR	ALUM. 6063-T5	-
10	SPA10062W	3M WATERPROOF SEAL	-	-
11	SPA10061W	3M WATERPROOF SEAL	-	-
12	KS211	FOAMING GASKET(HARDNESS:9±2A)	-	-
13	8-11	PILE WEATHER STRIPPING WITH FIN(0.335"X0.445")	-	-
14	7-3.5-4	PILE WEATHER STRIPPING WITH FIN(0.268"X0.161")	-	-
15	ACSPA010	FIX PANEL STOPPER	-	-
16	ACSPA009	TOP SEALING BLOCK AND STOPPER	-	-
17	-	TYPICAL ANCHOR	-	-
18	KS201	FOAMING GASKET(HARDNESS:9±2A)	-	-
19	ACSPA027	CONNECTING AND STRUT MEMBER	-	-
20	REI-SW001	INTERLOCK REINFORCEMENT	GALVANIZED STEEL	-
22		3/16" x 5/8" TEKS SCREW, 22" O.C.		
23		3/16" (#10) TEKS ASSEMBLY SCREW		
24	0325	1 3/16"X1 3/16"X1/8" THK. ALUMINUM ANGLE	6063-T6	-
H1	-	WINDOW ROLLER	-	HOPO
H2	ALU CS NHM0030	HOOK LOCK	-	SIEGENIA

MCY ENGINEERING, INC.
GLAZING CONSULTANTS

12781 MIRAMAR PARKWAY #301
MIRAMAR, FL 33027 P: 786-360-2786

www.MCYEngineering.com mcy@mcyengineering.com

SPA100 Sliding Glass Door SYSTEM - L.M.I.&S.M.I.
SHANGHAI SUPERHOUSE BUILDING MATERIAL
No.10 Hangfan Road, Pudong District,
Shanghai, China
TEL:86 021-5822 0630

FLORIDA APPROVAL:
FL # 30923.1

YIPING WANG, P.E.
FLORIDA REGISTRATION
FL #55983
C.A.N. 28677

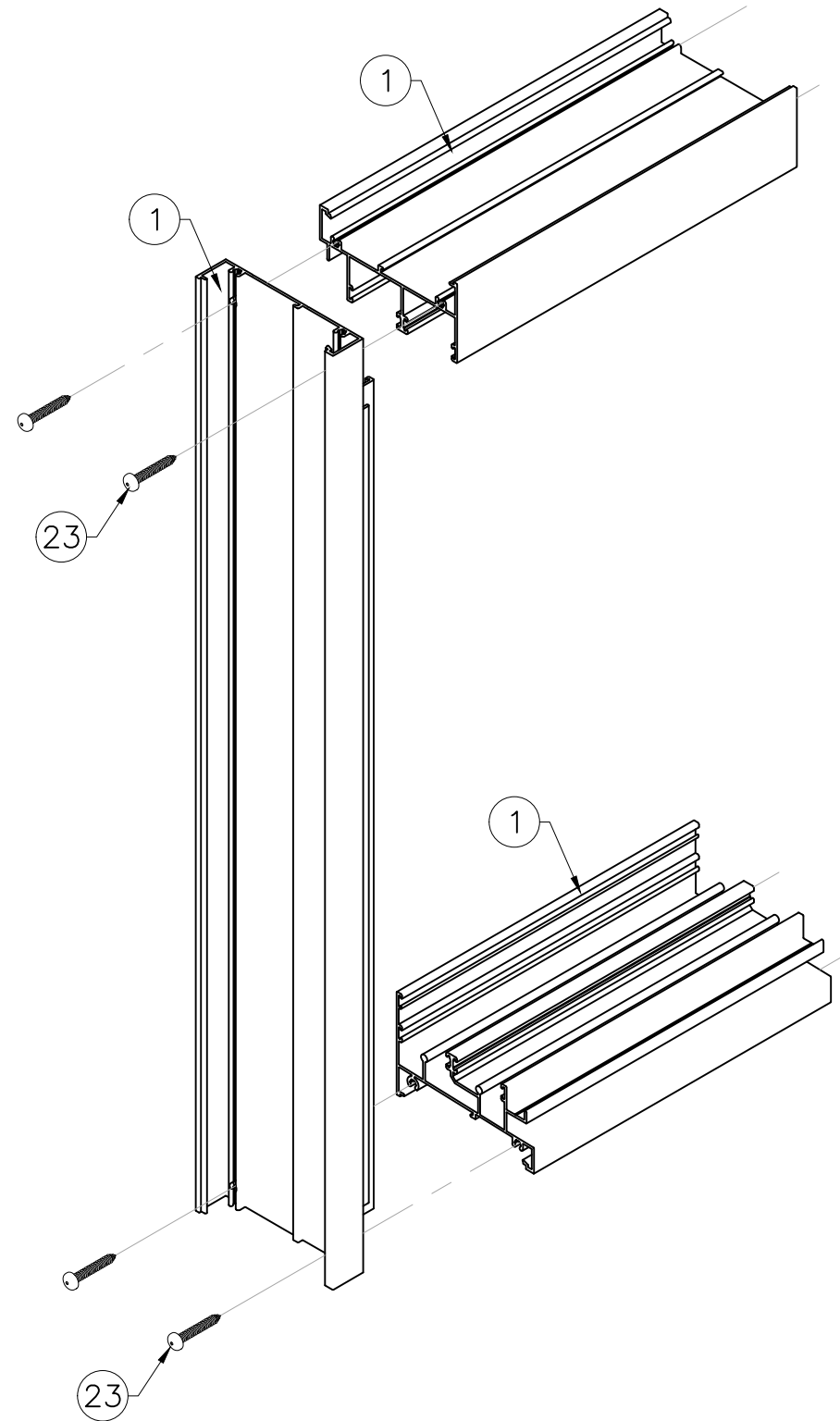
Rev. No.	Date	Drawn By	Description

DRAWING NO.

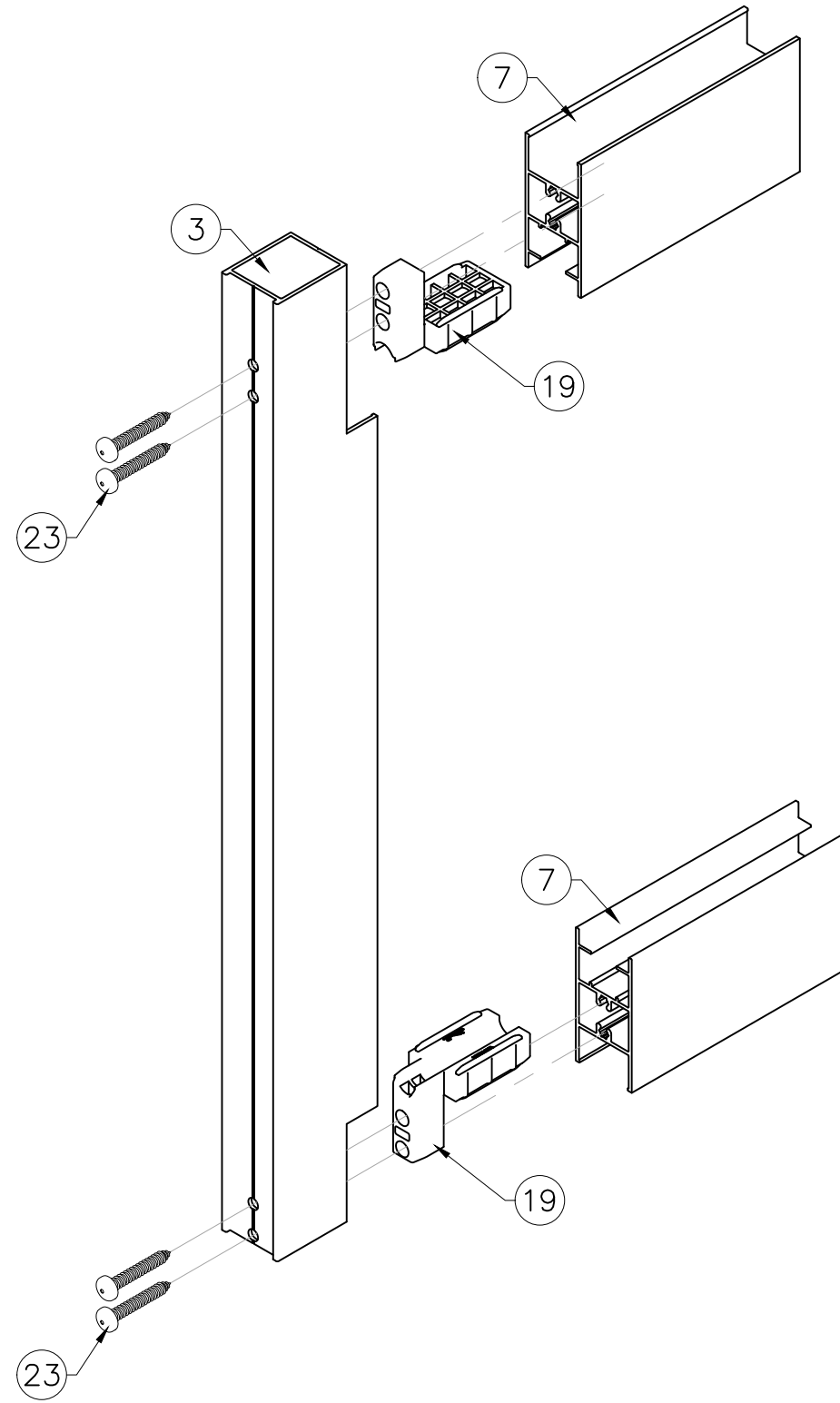
AD19-29

BOM

Sheet No.
7 OF 8



FRAME CORNER ASSEMBLY



SASH CORNER ASSEMBLY

FLORIDA APPROVAL:
FL # 30923.1

YIPING WANG, P.E.
FLORIDA REGISTRATION
FL #55983
C.A.N. 28677

MCY ENGINEERING, INC.
GLAZING CONSULTANTS
12781 MIRAMAR PARKWAY #301
MIRAMAR, FL 33027 P: 786.360.2786
www.MCYEngineering.com mcy@mcyengineering.com

SPA100 Sliding Glass Door SYSTEM - L.M.I.&S.M.I.
SHANGHAI SUPERHOUSE BUILDING MATERIAL
No.10 Hangfan Road, Pudong District,
Shanghai, China
TEL:86 021-5822 0630

Rev. No.	Date	Drawn By	Description

Drawn Date 12/04/2019

Drawn By

DRAWING NO. AD19-29

ISO

Sheet No. 8 OF 8