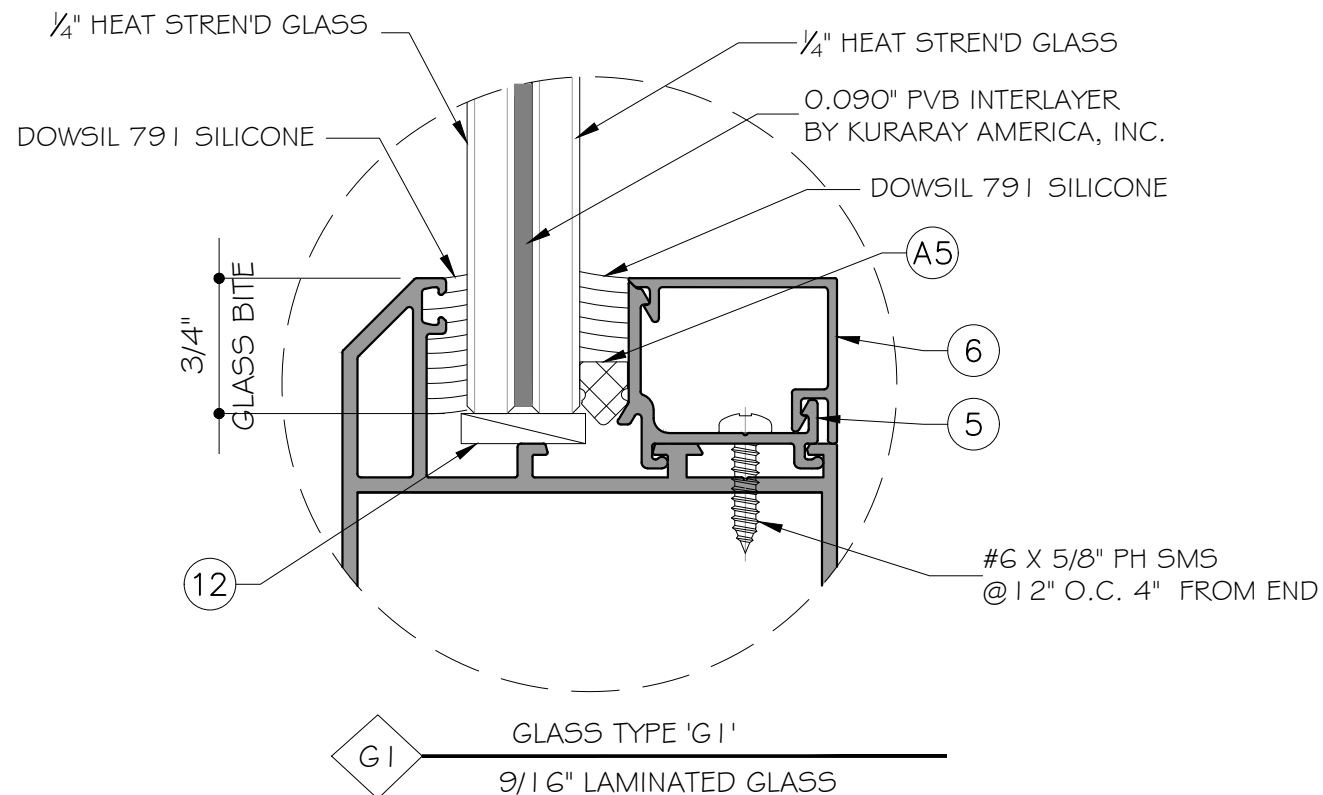


ALUMINUM BI-FOLD DOOR LARGE MISSILE IMPACT (L.M.I.) IMPACT LEVEL "D"



NOTE:
GLASS COMPLIES WITH ASTM E 1300-09
(3 SEC. GUSTS).

GENERAL NOTES:

- THIS PRODUCT HAS BEEN DESIGNED AND TESTED TO COMPLY WITH THE REQUIREMENTS OF THE FLORIDA BUILDING CODE 6TH EDITION (2017) / 7TH EDITION (2020) INCLUDING HIGH VELOCITY HURRICANE ZONE (HVHZ).
- DOORS RATED FOR LARGE MISSILE IMPACT. LMI SYSTEM TO BE USED FOR INSTALLATIONS UP TO 30 FT OF GRADE. IMPACT SHUTTERS ARE NOT REQUIRED.
- THESE BI-FOLDING DOOR ARE APPROVED FOR AIR AND WATER INFILTRATION.
- ANCHORS SHALL BE AS LISTED, SPACED AS SHOWN ON DETAILS. ANCHORS EMBEDMENT TO BASE MATERIAL SHALL BE BEYOND WALL DRESSING OR STUCCO.
- ANCHORING OR LOADING CONDITIONS NOT SHOWN IN THESE DETAILS ARE NOT PART OF THIS APPROVAL.
- MATERIALS INCLUDING BUT NOT LIMITED TO STEEL/METAL SCREWS THAT COME INTO CONTACT WITH OTHER DISSIMILAR MATERIALS SHALL MEET THE REQUIREMENTS OF THE FLORIDA BUILDING CODE 6TH EDITION (2017) / 7TH EDITION (2020) SECTION AS APPLICABLE.
- METAL STRUCTURES NOT SHANGHAI SUPERHOUSE BUILDING MATERIAL TO BE DESIGNED TO SUPPORT THE LOADS IMPOSED BY THIS GLAZING SYSTEM AND TO TRANSFER SUCH LOADS TO THE BUILDING MAIN STRUCTURE.
- ULTIMATE LOAD OBTAINED FROM ASCE 7, MULTIPLY BY 0.6 SHALL BE LESS THAN OR EQUAL TO MAX. DESIGN LOAD IN THIS DOCUMENT. THE DESIGN LOADS SHOWN IN THIS DOCUMENT ARE ALLOWABLE DESIGN LOADS.

INSTRUCTIONS:
USE CHARTS AS FOLLOWS.

- STEP 1: DETERMINE DESIGN WIND LOAD REQUIREMENTS BASED ON WIND VELOCITY, BLDG. HEIGHT, WIND ZONE USING APPLICABLE ASCE 7 STANDARD OR WIND TUNNEL REPORTS.
- STEP 2: SEE FOR GLASS OPTION ABOVE ON THIS COVER SHEET
SEE SHEET E1 FOR APPROVED DOOR SIZE AND DESIGN LOAD CAPACITY BASED ON APPLICABLE WIND DURATION.
- STEP 3: SEE ANCHOR TYPE ON SHEET A1.
SEE SHEET E1 FOR ANCHOR REQUIREMENT.

ABBREVIATIONS AND SYMBOLS	
D.L.O. - DAYLIGHT OPENING	
F.H. - FRAME HEIGHT	
F.W. - FRAME WIDTH	
W/ - WITH	
W/O - WITHOUT	
O.C. - ON CENTER	

FLORIDA APPROVAL:
FL # 32506

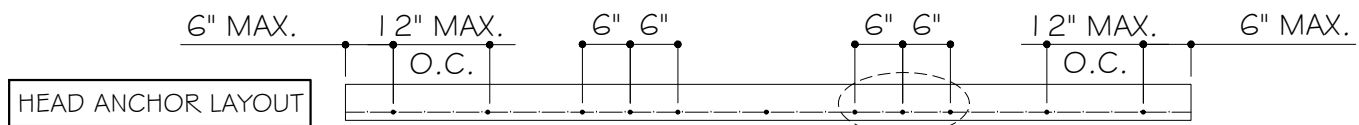


MCY ENGINEERING, INC.
GLAZING CONSULTANTS
12781 MIRAMAR PARKWAY #301
MIRAMARI, FL. 33027 P: 786.360.2786
www.MCYEngineering.com mcy@mcyengineering.com

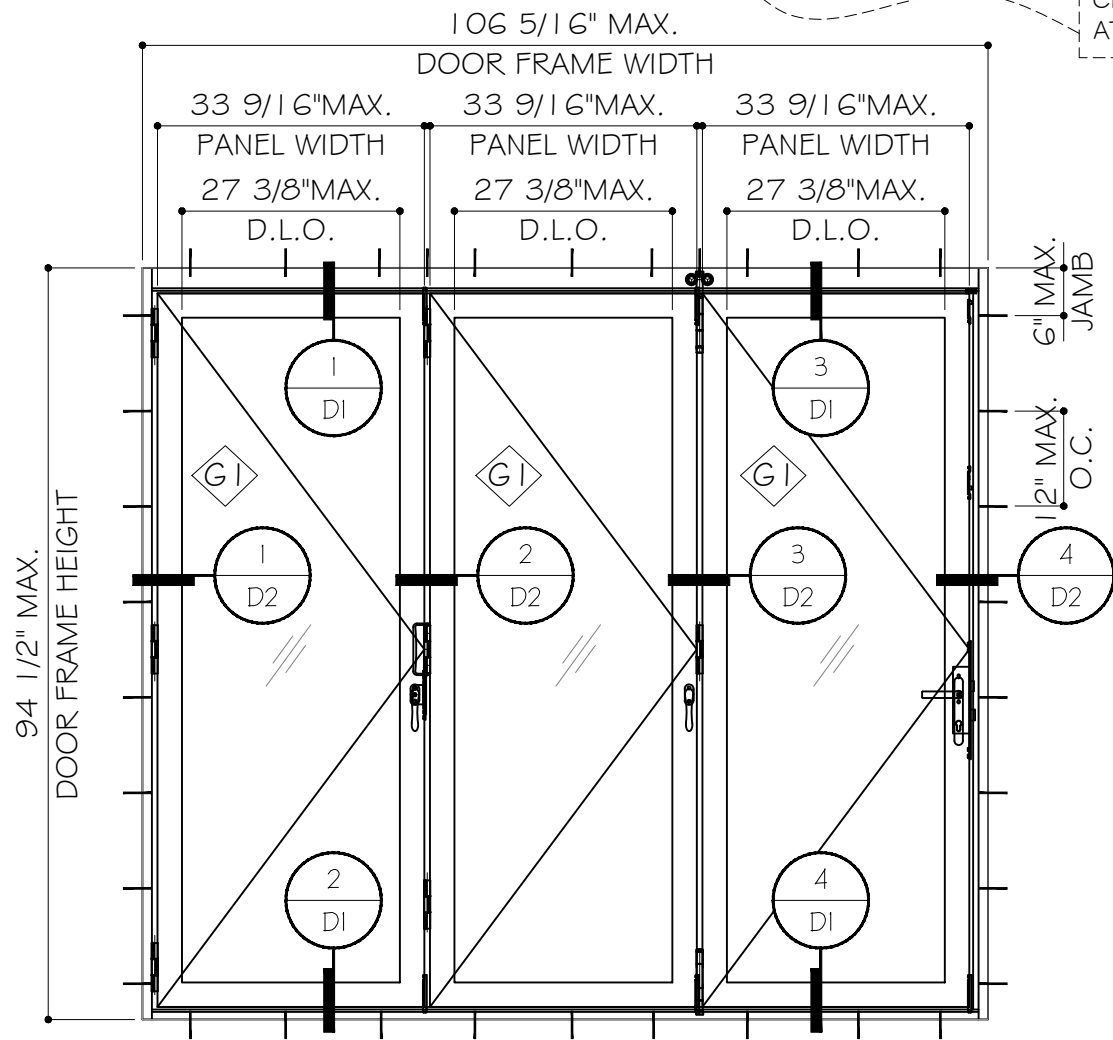
ALUMINUM BI-FOLD DOOR- L.M.I.
SHANGHAI SUPERHOUSE BUILDING MATERIAL
No.10 Hangfan Road, Pudong District,
Shanghai, China
TEL.86 021-5822 0630

Rev. No.	Date	Drawn By	Description

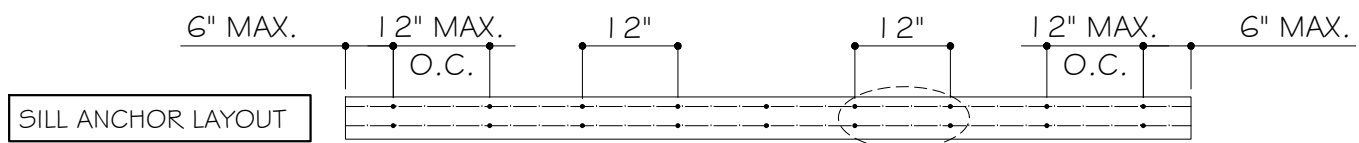
Drawn Date: 08/03/2020
DRAWING NO.: AD20-25
COVER
Sheet No.: 1 OF 8



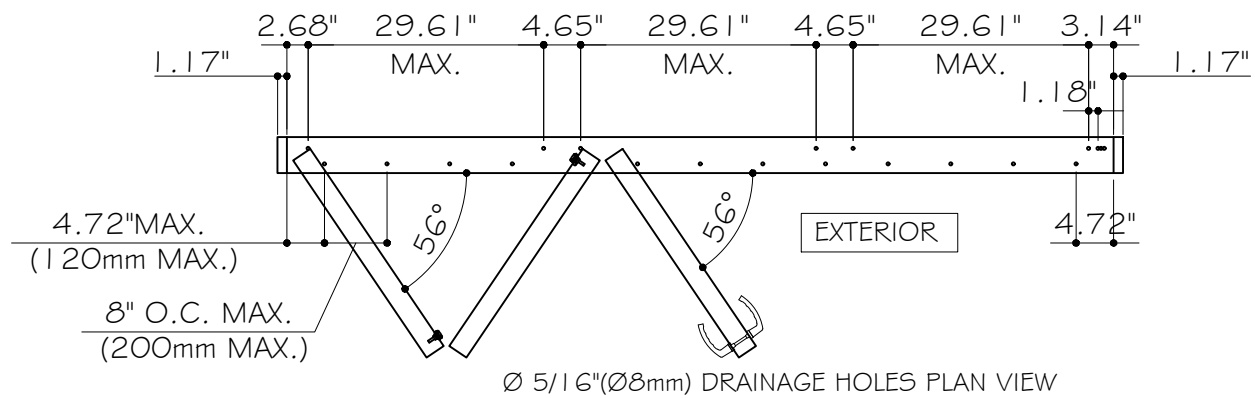
CLUSTER OF ANCHORS AT MEETING STILE



TYPICAL EXTERIOR ELEVATIONS
3 PANEL DOOR (XXX)

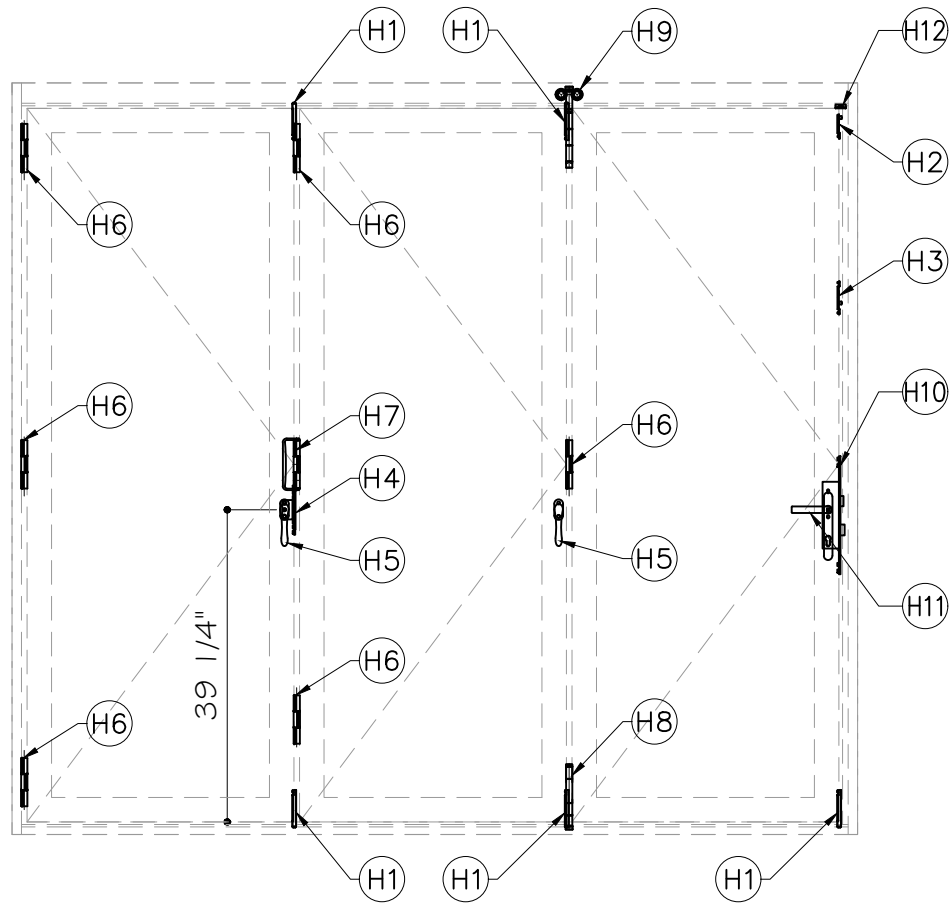


ANCHORS IN PAIRS AT SILL



Ø 5/16" (Ø8mm) DRAINAGE HOLES PLAN VIEW

DESIGN LOADS	
(FOR SIZE SHOWN ABOVE OR SMALLER AS PERMITTED BY FBC)	
+55 PSF	
-55 PSF	



HARDWARE LAYOUT

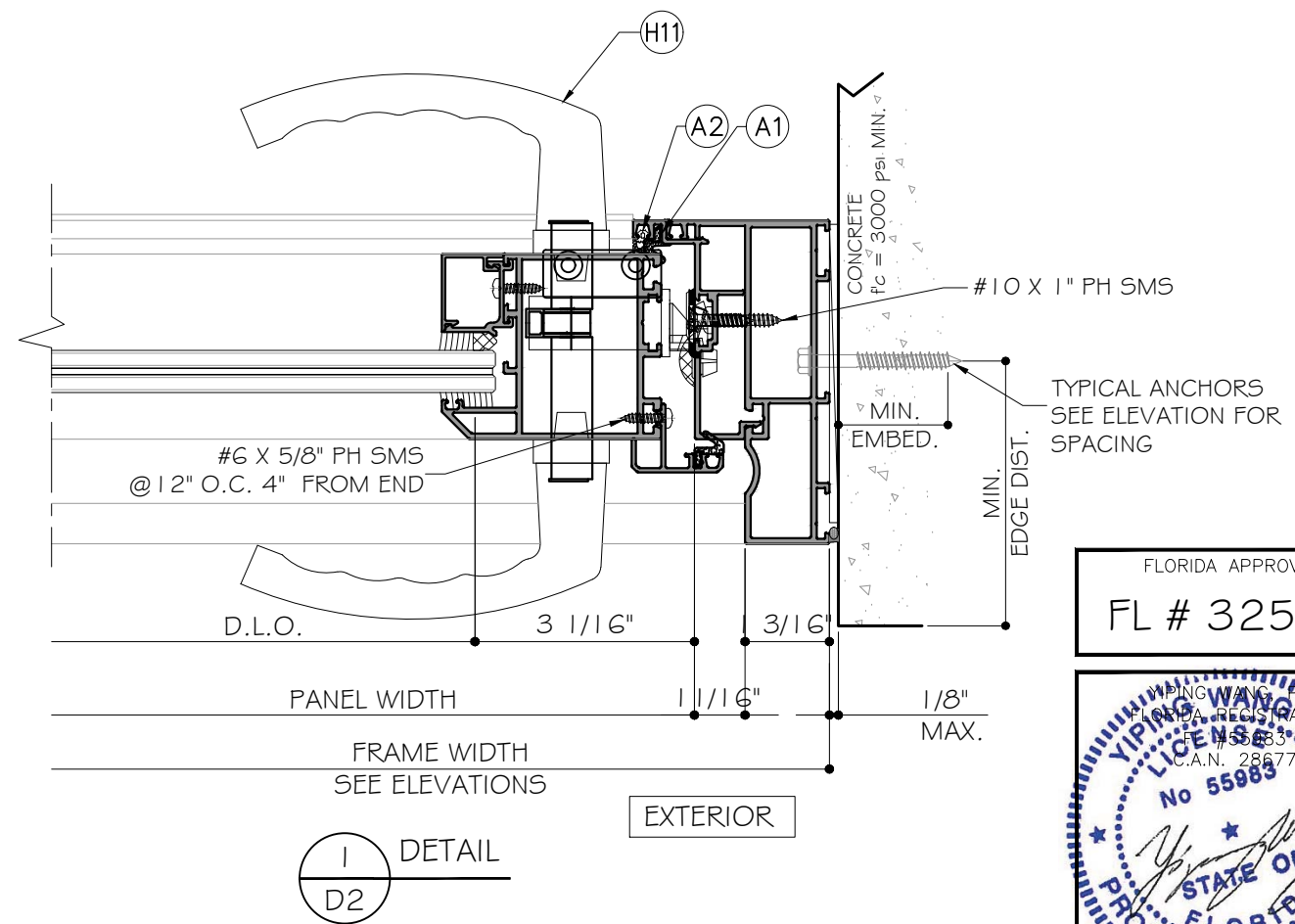
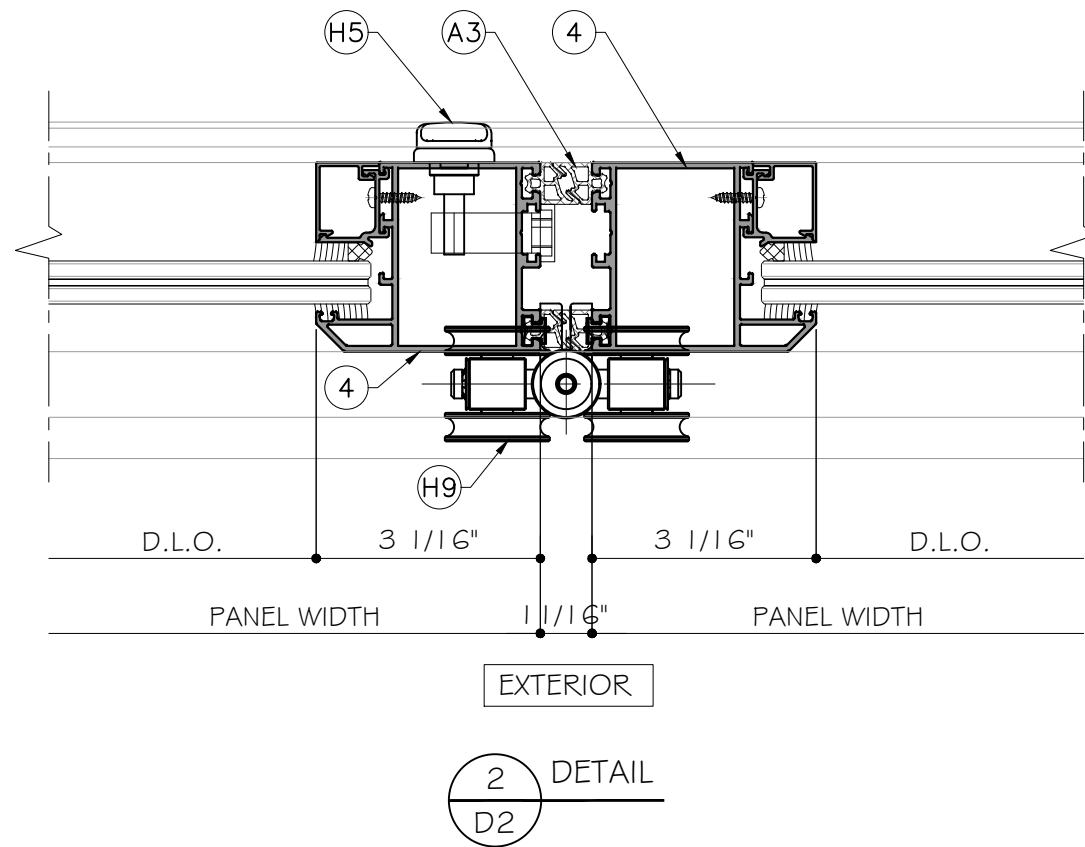
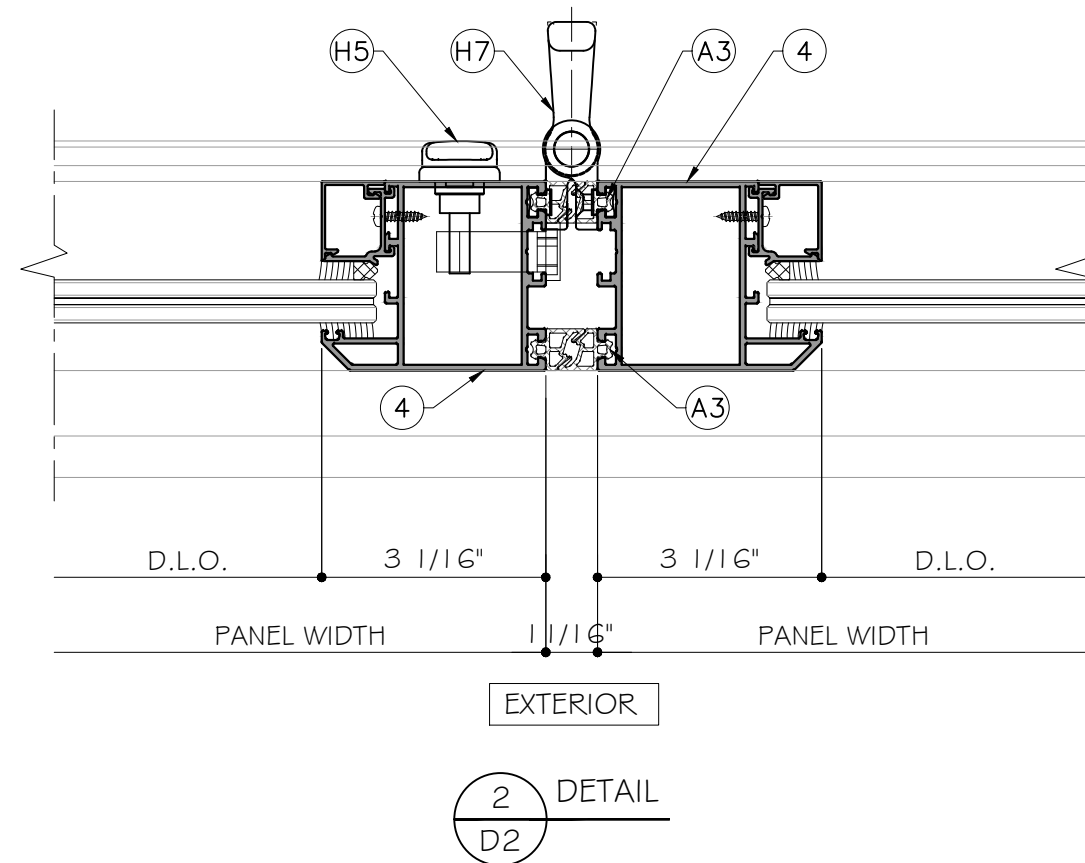
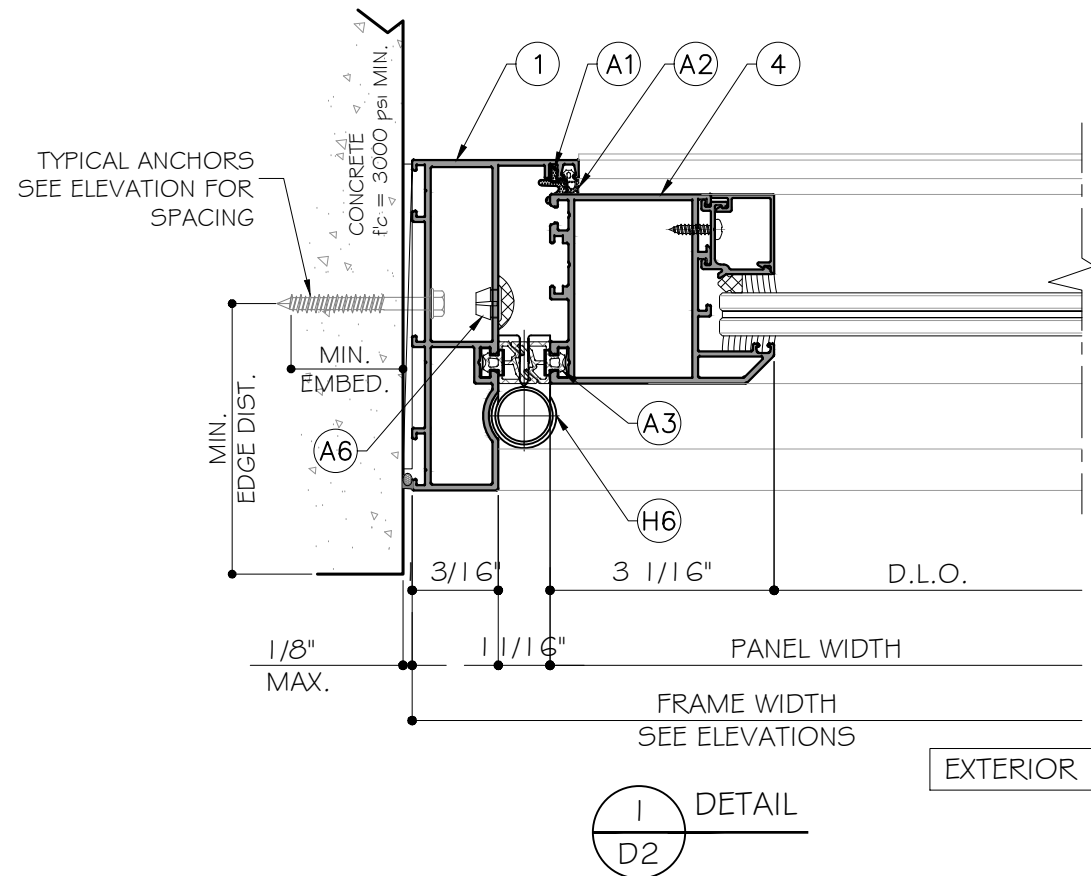
FLORIDA APPROVAL:
FL # 32506



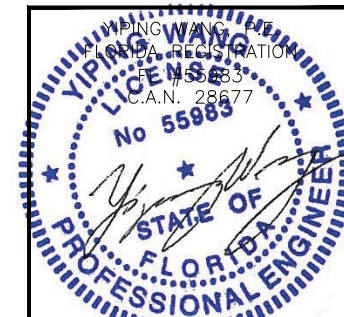
MCY ENGINEERING, INC.
GLAZING CONSULTANTS
12781 MIRAMAR PARKWAY #301
MIRAMAR, FL 33027 P: 786.360.2786
www.MCYEngineering.com mcy@mcyengineering.com

ALUMINUM BI-FOLD DOOR- L.M.I.
SHANGHAI SUPERHOUSE BUILDING MATERIAL
No. 10 Hangfan Road, Pudong District,
Shanghai, China
TEL.86 021-5822 0630

Drawn Date	Drawn By	Description
08/03/2020		
DRAWING NO. AD20-25		
E1		
Sheet No. 2 OF 8		



FLORIDA APPROVAL:
FL # 32506



MCY ENGINEERING, INC.
GLAZING CONSULTANTS
12781 MIRAMAR PARKWAY #301
MIRAMARI, FL 33027
P: 786.360.2786
www.MCYEngineering.com mcy@mcyengineering.com

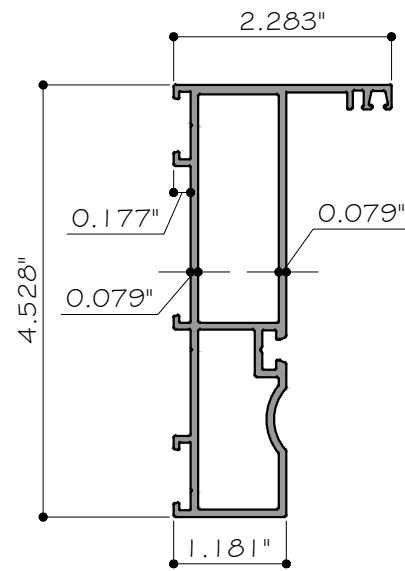
ALUMINUM BI-FOLD DOOR- L.M.I.
SHANGHAI SUPERHOUSE BUILDING MATERIAL
No.10 Hangfan Road, Pudong District,
Shanghai, China
TEL.86 021-5822 0630

Rev. No.	Date	Drawn By	Description

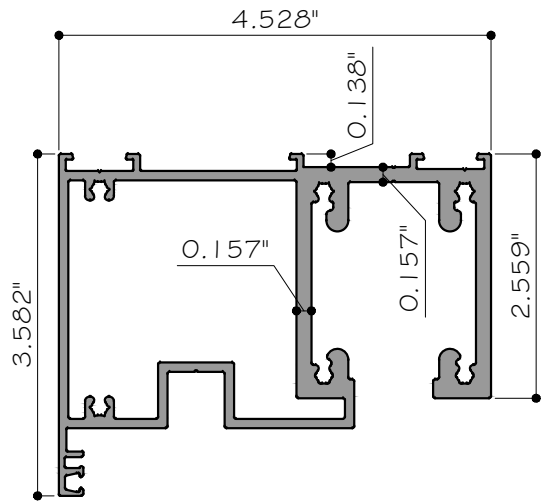
Drawn Date: 08/03/2020

DRAWING NO. AD20-25

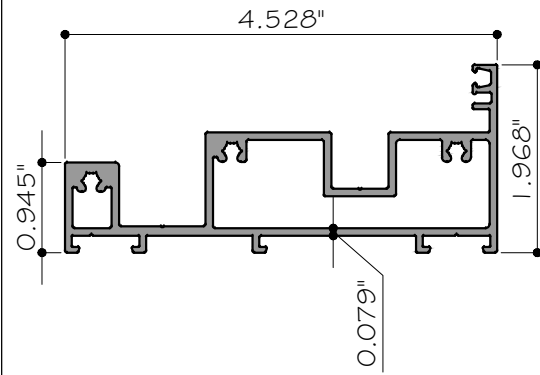
Sheet No. 4 OF 8



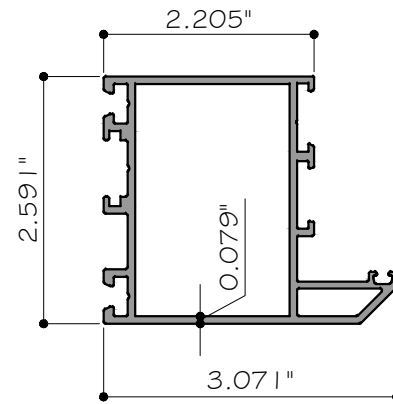
1 JAMB
SP11503 6063-T5



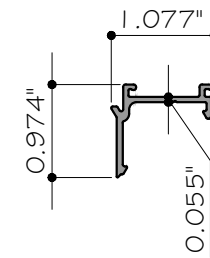
2 TOP TRACK
SP11501 6063-T5



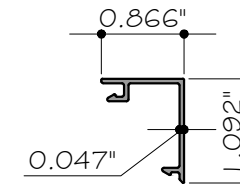
3 BOTTOM TRACK
SP11502 6063-T5



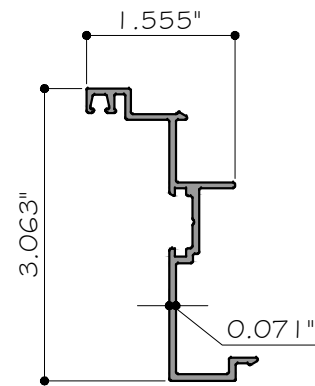
4 SASH
SP11504 6063-T5



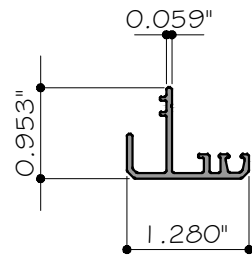
5 GLASS STOP
SP11509 6063-T5



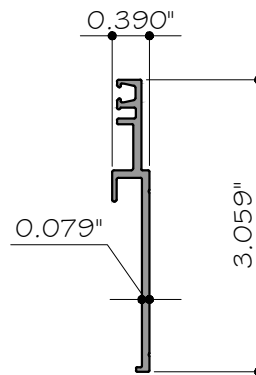
6 STOP SNAP COVER
SP11510 6063-T5



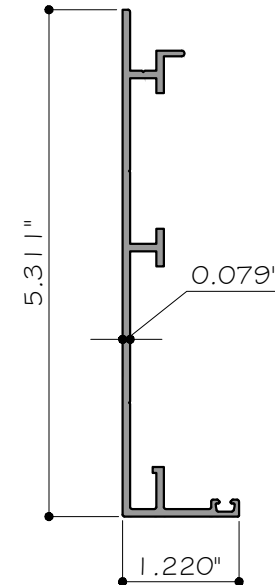
7 LOCK JAMB
SP11507 6063-T5



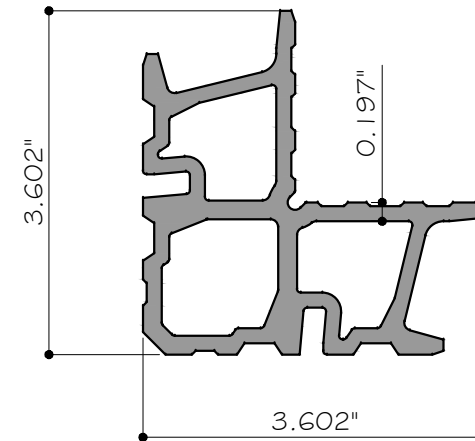
8 MEETING STILE ADAPTOR
SP11506 6063-T5



9 DOOR STOP
SP11511 6063-T5



10 SUB SILL
SP11508 6063-T5

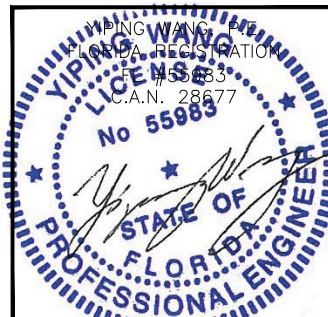


11 CLAPING CORNER
JM405 6063-T5

MCY ENGINEERING, INC.
GLAZING CONSULTANTS
12781 MIRAMAR PARKWAY #301
MIRAMAR, FL 33027 P: 786.360.2786
www.MCYEngineering.com mcy@mcyengineering.com

ALUMINUM BI-FOLD DOOR- L.M.I.
SHANGHAI SUPERHOUSE BUILDING MATERIAL
No.10 Hangfan Road, Pudong District,
Shanghai, China
TEL.86 021-5822 0630

FLORIDA APPROVAL:
FL # 32506



Rev. No.	Date	Drawn By	Description

Drawn Date	Drawn By
08/03/2020	
DRAWING NO.	
AD20-25	
PARTS	
Sheet No.	
6 OF 8	

BILL OF MATERIALS

ITEM	PART	DESCRIPTION	MATERIAL	MANUF. / REMARKS
1	SPI1503	JAMB	ALUM. 6063-T5	SHANGHAI SUPERHOUSE BUILDING MATERIAL
2	SPI1501	TOP TRACK	ALUM. 6063-T5	SHANGHAI SUPERHOUSE BUILDING MATERIAL
3	SPI1502	BOTTOM TRACK	ALUM. 6063-T5	SHANGHAI SUPERHOUSE BUILDING MATERIAL
4	SPI1504	SASH	ALUM. 6063-T5	SHANGHAI SUPERHOUSE BUILDING MATERIAL
5	SPI1509	GLASS STOP	ALUM. 6063-T5	SHANGHAI SUPERHOUSE BUILDING MATERIAL
6	SPI1510	STOP SNAP COVER	ALUM. 6063-T5	SHANGHAI SUPERHOUSE BUILDING MATERIAL
7	SPI1507	LOCK JAMB	ALUM. 6063-T5	SHANGHAI SUPERHOUSE BUILDING MATERIAL
8	SPI1506	MEETING STILE ADAPTOR	ALUM. 6063-T5	SHANGHAI SUPERHOUSE BUILDING MATERIAL
9	SPI1511	DOOR STOP	ALUM. 6063-T5	SHANGHAI SUPERHOUSE BUILDING MATERIAL
10	SPI1508	SUB SILL	ALUM. 6063-T5	SHANGHAI SUPERHOUSE BUILDING MATERIAL
11	JM405	CLAPING CORNER	ALUM. 6063-T5	SHANGHAI SUPERHOUSE BUILDING MATERIAL
12	-	0.1575" (4mm) THICKNESS SETTING BLOCK AT 1/4" POINT (HARDNESS:48 HRR)	PAGG	-
A1	KS525	FOAMING GASKET (HARDNESS:9±2A)	-	-
A2	SBWG-001	EPDM GASKET (HARDNESS:65±5 SHORE A)	-	-
A3	SBW-35820	EPDM GASKET (HARDNESS:65±5 SHORE A)	-	-
A4	SBW-35254	EPDM GASKET (HARDNESS:65±5 SHORE A)	-	-
A5	SBW-26960	EPDM GASKET (HARDNESS:65±5 SHORE A)	-	-
A6	-	(M10-12MM) COVER	-	-
H1	SBWH55001	BOLT	-	-
H2	254509	LOCK DEVICE POINT	-	-
H3	*BQD25450	MIDDLE LOCK DEVICE POINT	-	-
H4	ROTO487493	LOCKCASE	-	-
H5	T28D	HANDLE	-	-
H6	FTL310-07	HINGE	-	-
H7	FTL310-08	HINGE	-	-
H8	FTL310-02	BOTTOM ROLLER GUIDE	-	-
H9	FTL310-01	TOP ROLLER	-	-
H10	640870	DOOR LOCK	-	-
H11	775970	DOOR HANDLE	-	-
H12	I630FJS-16	LIFT BLOCK	-	-

MCY ENGINEERING, INC.
GLAZING CONSULTANTS

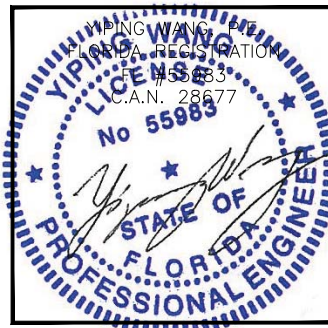
12781 MIRAMAR PARKWAY #301
MIRAMAR, FL. 33027 P: 786.360.2786
www.MCYEngineering.com mcy@mcyengineering.com

ALUMINUM BI-FOLD DOOR- L.M.I.

SHANGHAI SUPERHOUSE BUILDING MATERIAL
No.10 Hangfan Road, Pudong District,
Shanghai, China
TEL.86 021-5822 0630

									Description

FLORIDA APPROVAL:
FL # 32506



Drawn Date	08/03/2020	Drawn By	
DRAWING NO.			
AD20-25			
M1			
Sheet No.			
7 OF 8			

