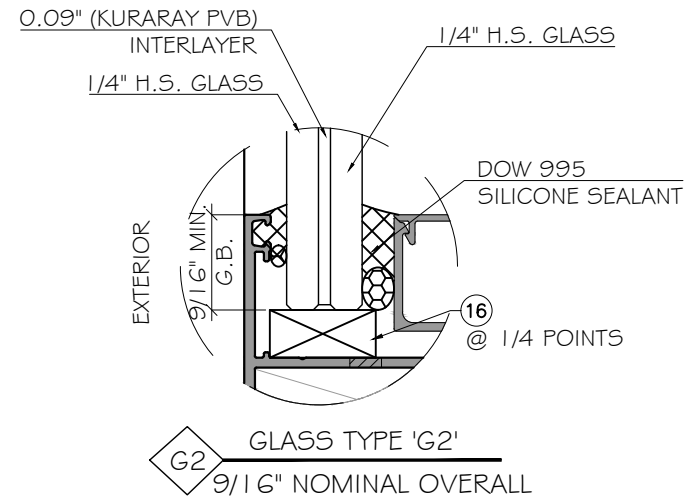


SHANGHAI SUPERHOUSE BUILDING MATERIAL CO., LTD SP60 FIXED WINDOW LARGE MISSILE IMPACT



NOTE:
GLASS COMPLIES WITH ASTM E1300-09
(3 SEC. GUSTS).

GENERAL NOTES:

- THIS PRODUCT HAS BEEN DESIGNED AND TESTED TO COMPLY WITH THE REQUIREMENTS OF THE 7TH EDITION OF FLORIDA BUILDING CODE 2020 INCLUDING HIGH VELOCITY HURRICANE ZONE (HVHZ).
- WINDOWS ARE RATED FOR LARGE MISSILE IMPACT. IMPACT SHUTTERS ARE NOT REQUIRED.
- THESE WINDOWS ARE APPROVED FOR AIR AND WATER INFILTRATION.
- ANCHORS SHALL BE AS LISTED, SPACED AS SHOWN ON DETAILS. ANCHORS EMBEDMENT TO BASE MATERIAL SHALL BE BEYOND WALL DRESSING OR STUCCO.
- ANCHORING OR LOADING CONDITIONS NOT SHOWN IN THESE DETAILS ARE NOT PART OF THIS APPROVAL.
- MATERIALS INCLUDING BUT NOT LIMITED TO STEEL/ METAL SCREWS THAT COME INTO CONTACT WITH OTHER DISSIMILAR MATERIALS SHALL MEET THE REQUIREMENTS OF THE 7TH EDITION OF FLORIDA BUILDING CODE 2020 SECTION AS APPLICABLE.
- METAL STRUCTURES BY OTHERS TO BE DESIGNED TO SUPPORT THE LOADS IMPOSED BY THIS GLAZING SYSTEM AND TO TRANSFER SUCH LOADS TO THE BUILDING MAIN STRUCTURE.
- ULTIMATE LOAD OBTAINED FROM ASCE 7-16, MULTIPLY BY 0.6 SHALL BE LESS THAN OR EQUAL TO MAX. DESIGN LOAD IN THIS DOCUMENT. THE DESIGN LOADS SHOWN IN THIS DOCUMENT ARE ALLOWABLE DESIGN LOADS.
- SEALANT:
ALL FRAME CORNERS, JOINTS, MULLION SEAMS AND PERIMETER GLAZING BEAD TO FRAME INSTALLATION FASTENERS SEALED WITH SILICONE SEALANT.

USE CHARTS AS FOLLOWS.

- STEP 1:** DETERMINE DESIGN WIND LOAD REQUIREMENTS BASED ON WIND VELOCITY, BLDG. HEIGHT, WIND ZONE USING APPLICABLE ASCE 7-16 STANDARD OR WIND TUNNEL REPORTS.
- STEP 2:** SEE SHEET E1 & E2 FOR APPROVED TYPICAL ELEVATION & CONFIGURATION.
- STEP 3:** ANCHOR OPTION SEE SHEET D1. ANCHOR LAYOUT SEE SHEET E1 & E2.
- STEP 4:** THE LOWEST VALUE RESULTING FROM STEPS 2 & 3 THAT EXCEED THE DESIGN WIND PRESSURES DETERMINED THRU STEP 1 SHALL APPLY TO ENTIRE SYSTEM.

ABBREVIATIONS AND SYMBOLS	
G.B. - GLASS BITE	
D.L.O. - DAYLITE OPENING	
F.H. - FRAME HEIGHT	
F.W. - FRAME WIDTH	
W/ - WITH	
W/O - WITHOUT	
O.C. - ON CENTER	

LIMITATIONS OF USE

A- THIS PRODUCT EVALUATION DOCUMENT (P.E.D.) PREPARED BY THIS ENGINEER IS GENERIC AND DOES NOT PROVIDE INFORMATION FOR A SITE SPECIFIC PROJECT, i.e. WHERE THE SITE CONDITIONS DEVIATE FROM THE P.E.D.

B- CONTRACTOR TO BE RESPONSIBLE FOR THE SELECTION, PURCHASE AND INSTALLATION OF THIS PRODUCT BASED ON THIS PRODUCT EVALUATION PROVIDED HE/SHE DOES NOT DEVIATE FROM THE CONDITIONS DETAILED ON THIS DOCUMENT.

C- THIS PRODUCT EVALUATION DOCUMENT WILL BE CONSIDERED INVALID IF ALTERED BY ANY MEANS.

D- SITE SPECIFIC PROJECTS SHALL BE PREPARED BY A FLORIDA REGISTERED ENGINEER OR ARCHITECT WHICH WILL BECOME THE ENGINEER OF RECORD (E.O.R.) FOR THE PROJECT AND WHO WILL BE RESPONSIBLE FOR THE PROPER USE OF THE P.E.D ENGINEER OF RECORD, ACTING AS A DELEGATED ENGINEER TO THE P.E.D ENGINEER SHALL SUBMIT TO THIS LATTER THE SITE SPECIFIC DRAWINGS FOR REVIEW.

E- THIS P.E.D. SHALL BEAR THE DATE AND ORIGINAL SEAL AND SIGNATURE OF THE PROFESSIONAL ENGINEER OF RECORD THAT PREPARED IT.

FLORIDA APPROVAL:
FL#40279

YONG WANG, P.E.
FLORIDA REGISTRATION
FL #55983
G.B. #528677

STATE OF FLORIDA
PROFESSIONAL ENGINEER

December 3rd, 2021
Only For Draft

MCY ENGINEERING, INC.
GLAZING CONSULTANTS

12781 MIRAMAR PKWY. STE. 301
MIRAMAR, FL 33027 P: 305.271.0117
www.MCYEngineering.com mcy@mcyengineering.com

SP60 FIXED WINDOW - L.M.I.

SHANGHAI SUPERHOUSE BUILDING MATERIAL
NO.10 HANGFAN ROAD, PUDONG DISTRICT
SHANG HAI, CHINA
TEL.86 021-5822 0630

Rev. No.	Date	Drawn By	Description
1.	11/25/2021	JAMES	RBC UPDATE

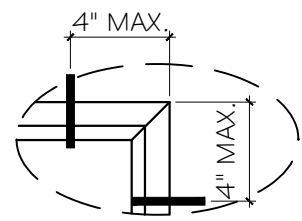
Drawn Date: 11/25/2021

Scale:

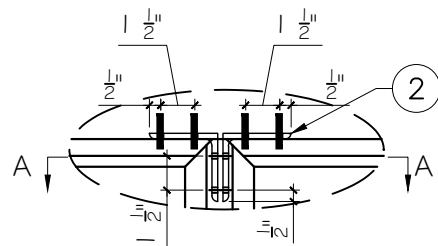
DRAWING NO.
AD21-39

COVER

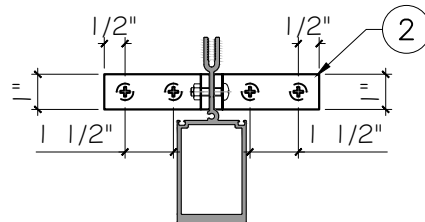
Sheet No.
1 OF 6



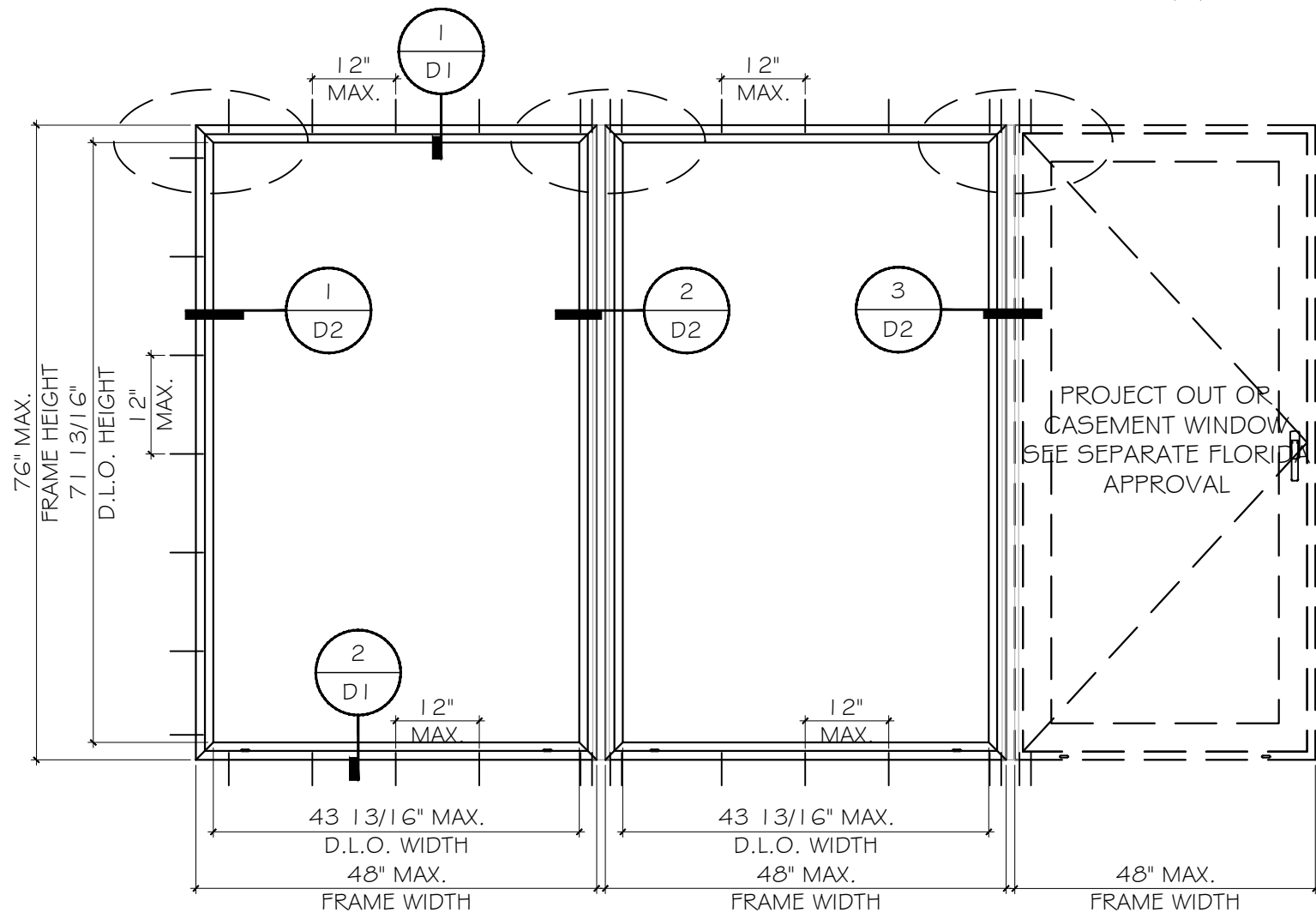
END OF JAMB



END OF MULLION

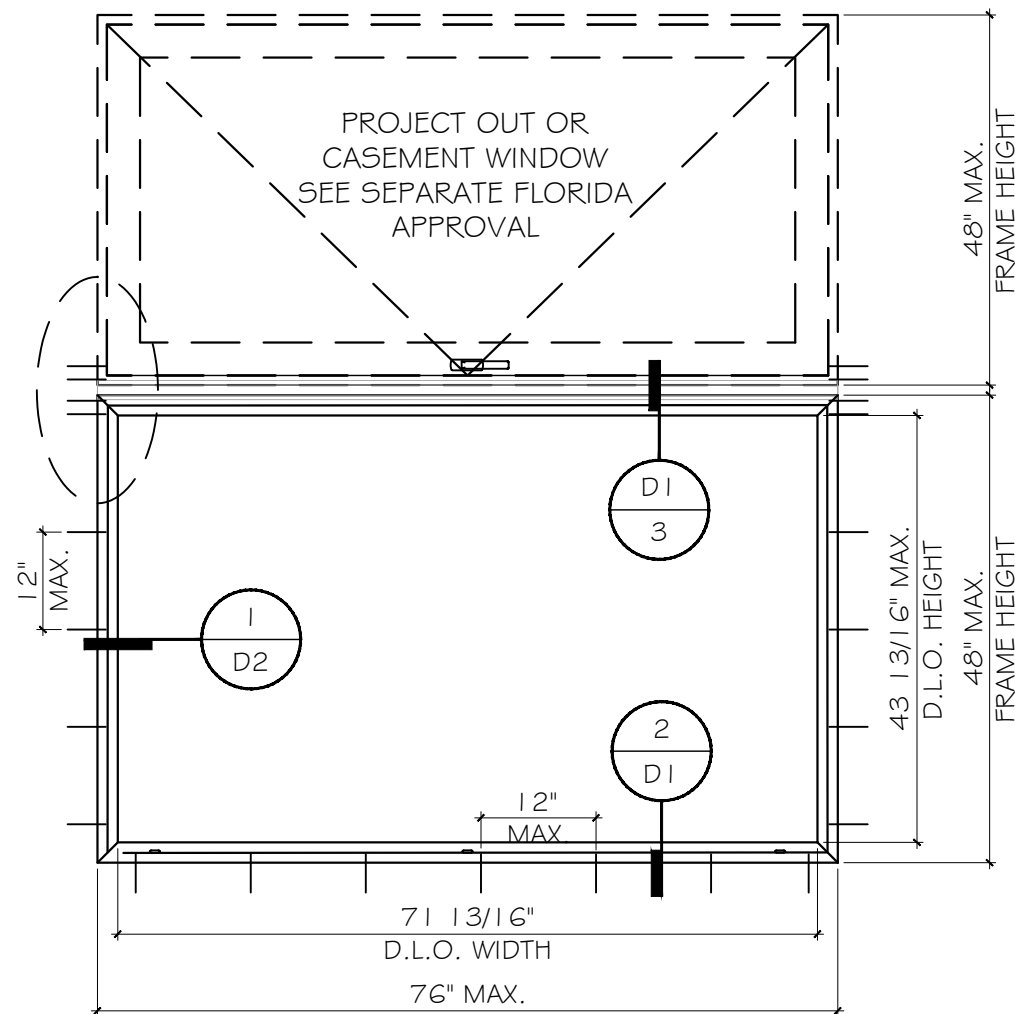


SECTION A-A



TYPICAL EXTERIOR ELEVATION

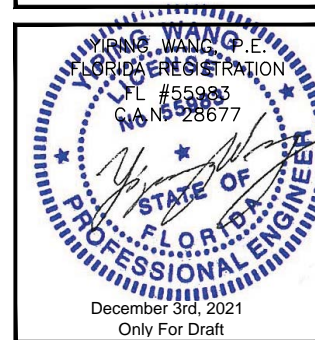
DESIGN LOAD
FOR SIZE SHOWN ABOVE OR SMALLER AS PERMITTED BY FBC
+60 PSF -60 PSF



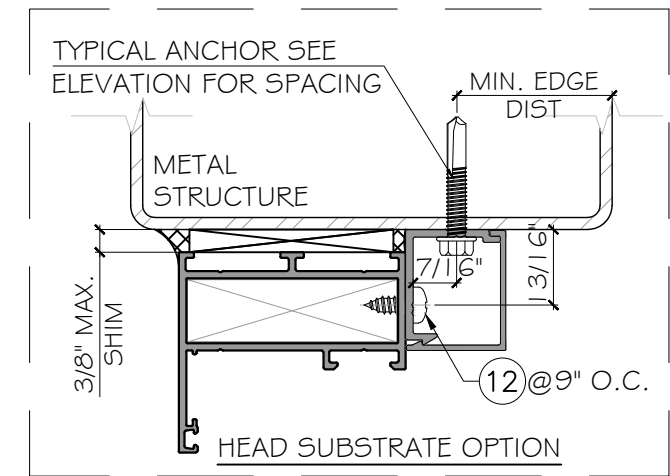
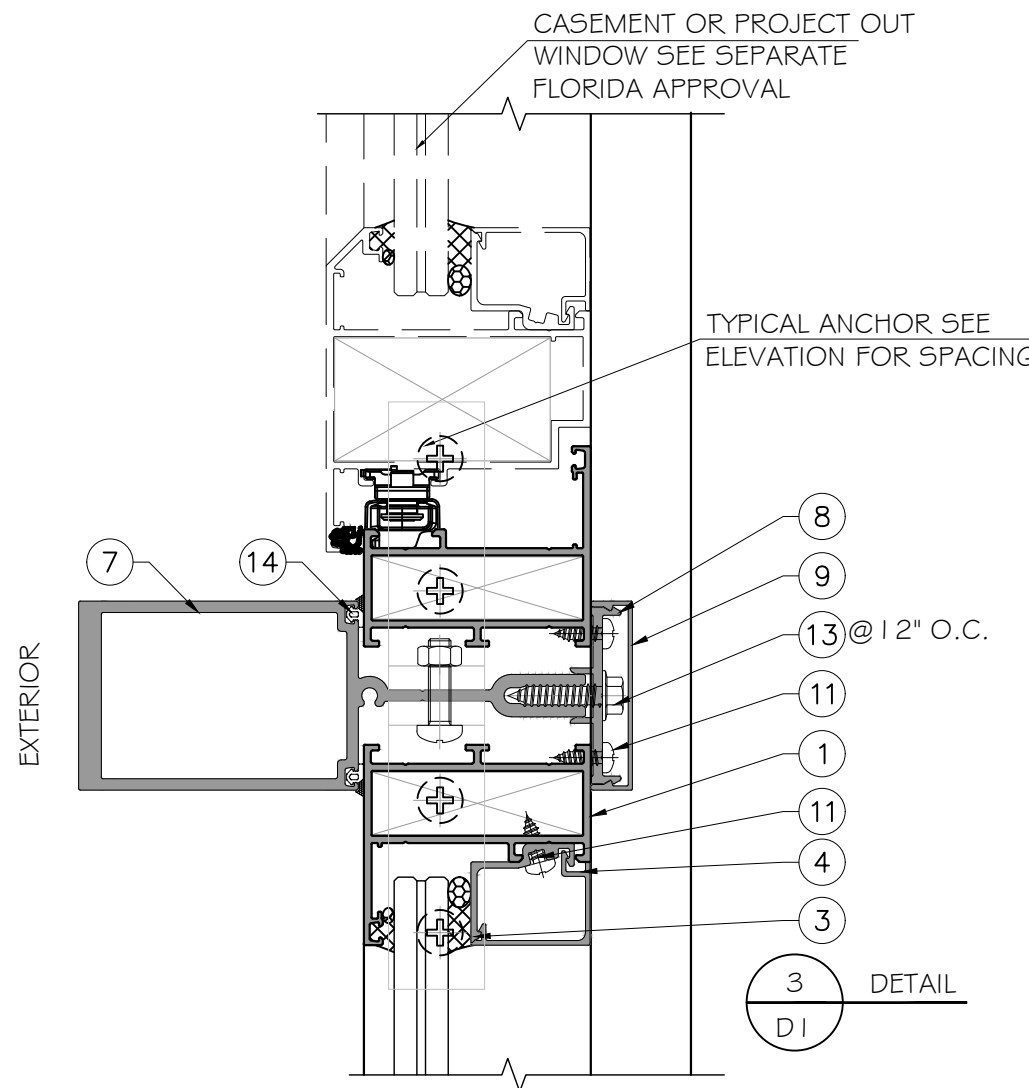
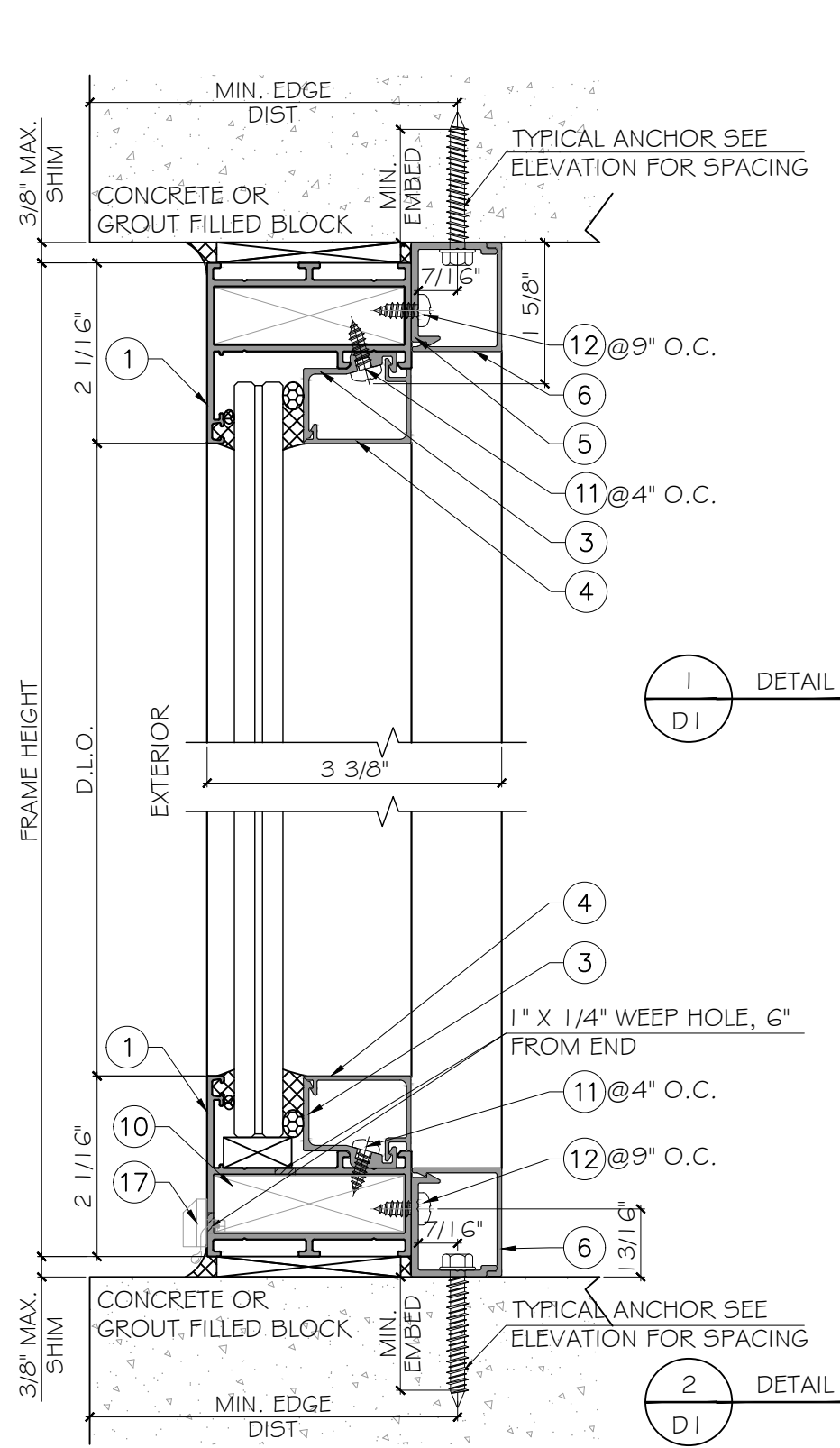
TYPICAL EXTERIOR ELEVATION

DESIGN LOAD
FOR SIZE SHOWN ABOVE OR SMALLER AS PERMITTED BY FBC
+60 PSF -60 PSF

FLORIDA APPROVAL:
FL#40279



Drawn Date	11/25/2021	Scale	
DRAWING NO.	AD21-39		
SHEET NO.	E2		
3 OF 6			



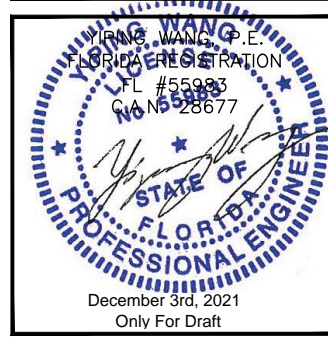
ANCHOR TYPES: (SEE ELEVATIONS FOR SPACING)

TYPE 'A' -- 1/4" DIA. ULTRACON+ BY 'DEWALT' (Fu= 164 KSI, Fy= 148 KSI)
 DIRECTLY INTO CONCRETE OR BLOCKS
 1 3/4" MIN. EMBED INTO CONCRETE (HEAD/ SILL/ JAMBS)
 1 3/4" MIN. EMBED INTO GROUT FILLED BLOCKS (JAMBS)

TYPE 'B' -- 1/4" DIA. SS SCREW (Fu= 100 KSI, Fy= 65 KSI)
 INTO FBC APPROVED MULLIONS (1/8" THK. MIN.)
 OR INTO METAL STRUCTURES, STEEL: 1/8" THK. MIN. (A36 MIN.)
 (3) THREADS MIN. TO EXTEND BEYOND METAL THICKNESS
 (STEEL IN CONTACT WITH ALUMINUM TO BE PLATED OR PAINTED)

TYPICAL EDGE DISTANCE
 INTO CONCRETE = 2-1/2" MIN.
 INTO METAL STRUCTURE = 3/4" MIN.
 CONCRETE AT HEAD, SILL OR JAMB f'c=3000PSI MIN.
 FILLED BLOCK AT JAMBS f'm=2000 PSI MIN.

FLORIDA APPROVAL:
FL#40279



MCY ENGINEERING, INC.
 GLAZING CONSULTANTS
 12781 MIRAMAR PKWY. STE. 301
 MIRAMAR, FL 33027 P: 305.271.0117
 www.MCYEngineering.com mcy@mcyengineering.com

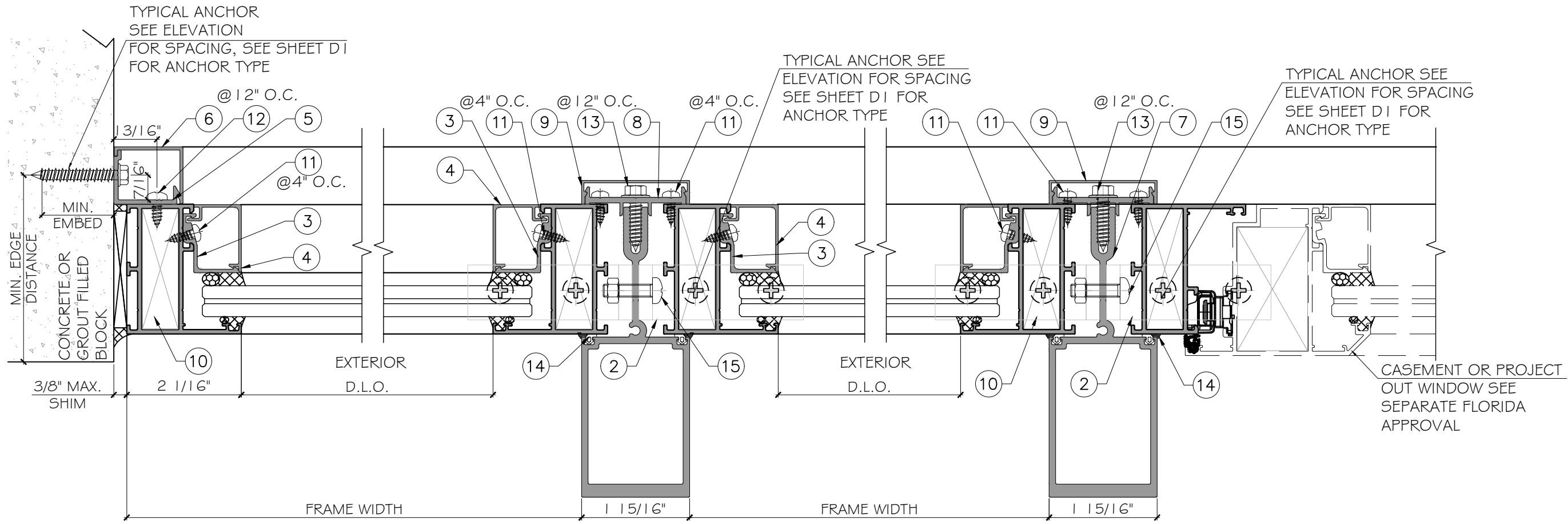
SP60 FIXED WINDOW - L.M.I.
 SHANGHAI SUPERHOUSE BUILDING MATERIAL
 NO.10 HANGFAN ROAD, PUDONG DISTRICT
 SHANGHAI, CHINA
 TEL:86 021-5822 0630

Rev. No.	Date	Drawn By	Description
1.	11/25/2021	JAMES	FBC UPDATE

Drawn Date: 11/25/2021 Scale: _____

DRAWING NO. **AD21-39**

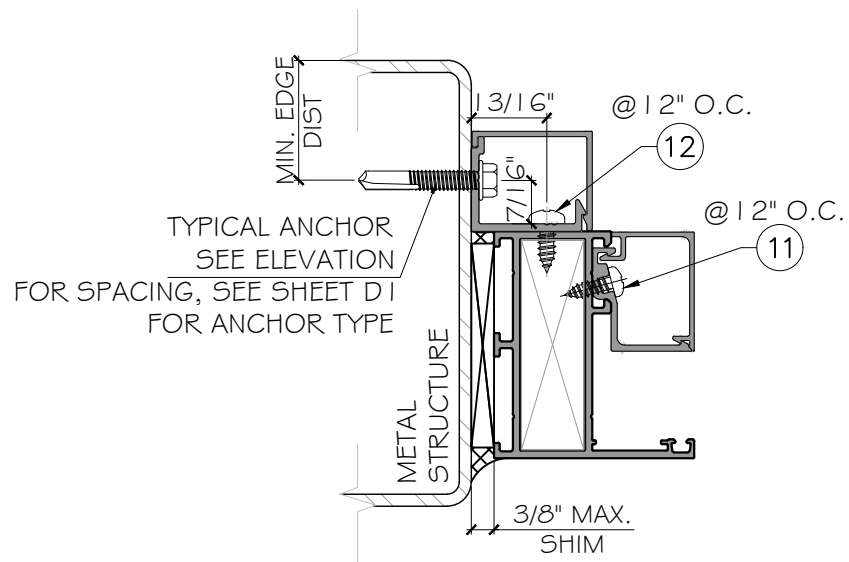
Sheet No. **4 OF 6**



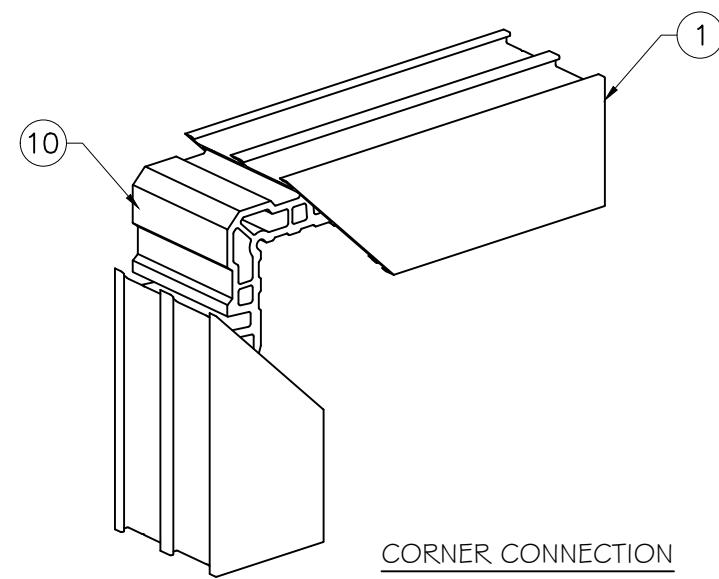
1
D2
DETAIL

2
D2
DETAIL

3
D2
DETAIL



JAMB SUBSTRATE OPTION

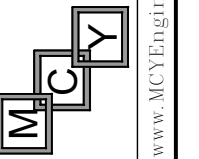


FLORIDA APPROVAL:
FL#40279

YONG WANG P.E.
FLORIDA REGISTRATION
FL #55983
CA #55983

December 3rd, 2021
Only For Draft

MCY ENGINEERING, INC.
GLAZING CONSULTANTS
12781 MIRAMAR PKWY. STE. 301
MIRAMAR, FL 33027 P: 305.271.0117
www.MCYEngineering.com mcy@mcyengineering.com



SP60 FIXED WINDOW - L.M.I.
SHANGHAI SUPERHOUSE BUILDING MATERIAL
NO.10 HANGFAN ROAD, PUDONG DISTRICT
SHANG HAI, CHINA
TEL:86 021-5822 0630

Rev. No.	Date	Drawn By	Description
1.	11/25/2021	JAMES	FBC UPDATE

Drawn Date: 11/25/2021

DRAWING NO.
AD21-39

Sheet No.
D2
5 OF 6

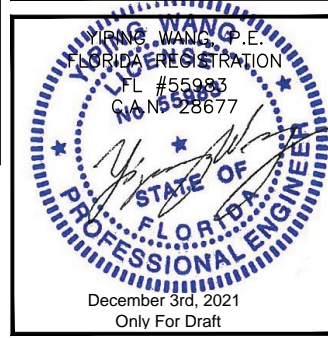
BILL OF MATERIALS

ITEM #	PROFILE	DESCRIPTION	MATERIAL	MANUFACTURER/REMARKS
1	SP6001	FRAME	6063-T5	SUPERHOUSE
2	ZL-758	MULLION CLIP	6063-T5	SUPERHOUSE
3	GLA032	GLASS STOP	6063-T5	SUPERHOUSE
4	GLB032	GLASS STOP COVER	6063-T5	SUPERHOUSE
5	SP6051	CLIP	6063-T5	SUPERHOUSE
6	SP6052	COVER	6063-T5	SUPERHOUSE
7	SP6007	STACKING MULLION	6063-T5	SUPERHOUSE
8	SP6008	PRESSURE BAR	6063-T5	SUPERHOUSE
9	SP6009	COVER	6063-T5	SUPERHOUSE
10	JMO022	CLAMPING CORNER	6063-T5	SUPERHOUSE
11		PAN HEAD SCREW DIA. 5/32" X 1/2"	STEEL	VARIES
12		#12 X 1/2" S.S. SCREW, 4" FROM EACH END, @9" O.C. F _u =100 PSI, F _y =65 PSI.	STEEL	VARIES
13		HEX HEAD SCREW DIA. 1/4" X 3 1/32"	STEEL	VARIES
14	SBWG-002	EPDM GASKET	EPDM	DURO 30 +/- 5
15		DIA. 1/4" X 3 1/32" PAN HEAD S.S. SCREW, WITH DIA. 1/4" NUT, (2) AT EACH MULLION END, F _u =100 PSI, F _y =65 PSI.	STEEL	VARIES
16		1/4" X 1", SETTING BLOCK	SILICONE	75 +/- 2A DURO.
17		WEEP HOLE COVER, 5/16 X 1-1/32"	-	VARIES

Technical drawings of window components with dimensions and callouts:

- 1** FRAME SP6001 ALUM. 6063-T5: Dimensions include 2.36" width, 2.09" height, 1.22" depth, and 0.08" offset.
- 3** GLASS STOP GLA032 ALUM. 6063-T5: Dimensions include 1.07" width, 1.04" height, and 0.06" offset.
- 4** GLASS STOP GLB032 ALUM. 6063-T5: Dimensions include 1.24" width, 0.98" height, and 0.05" offset.
- 5** CLIP SP6051 ALUM. 6063-T5: Dimensions include 1.20" height, 0.99" width, and 0.08" offset.
- 6** COVER SP6052 ALUM. 6063-T5: Dimensions include 1.04" width, 1.25" height, and 0.06" offset.
- 8** PRESSURE BAR SP6008 ALUM. 6063-T5: Dimensions include 1.83" width, 0.53" height, and 0.10" offset.
- 9** COVER SP6009 ALUM. 6063-T5: Dimensions include 1.97" width, 0.43" height, and 0.04" offset.
- 10** CLAMPING CORNER JMO022 ALUM. 6063-T5: Dimensions include 2.48" width and 2.48" height.
- 7** STACKING MULLION SP6007 ALUM. 6063-T5: Dimensions include 2.91" height, 1.97" width, 0.12" offset, and 0.44" top width.
- 2** MULLION CLIP ZL-758 ALUM. 6063-T5: Dimensions include 3.00" height, 1.50" width, 0.50" offset, and 0.25" top width.

FLORIDA APPROVAL:
FL#40279



MCY ENGINEERING, INC.
GLAZING CONSULTANTS
12781 MIRAMAR PKWY. STE. 301
MIRAMAR, FL 33027 P: 305.271.0117
www.MCYEngineering.com mcy@mcyengineering.com

SP60 FIXED WINDOW - L.M.I.
SHANGHAI SUPERHOUSE BUILDING MATERIAL
NO.10 HANGFAN ROAD, PUDONG DISTRICT
SHANG HAI, CHINA
TEL:86 021-5822 0630

Drawn Date	11/25/2021	Scale	
Drawn By	JAMES	Rev. No.	1.
Date	11-25-2021	Description	
DRAWING NO. AD21-39			
BOM			
Sheet No. 6 OF 6			